



Image courtesy Emmett D. Chisum Special Collections, University of Wyoming Libraries GV198.96.W82.G63 1941

1927

**HOBSON STARTING DUDE
CAMP, GREEN RIVER LAKE**

Green River Lakes is a scenic spot in western Wyoming that is soon to come into prominence as a tourist resort, from present appearances. Two outfits are getting ready for business there this summer, both with plans for extensive operations. Of Mr. Hobson's preparations now being made for his summer camp, Pin Pe-tre, Opal correspondent in the Kemmerer Gazette has this to say:

"W. N. Hobson, big game hunter and guide, who one year ago leased land from the forest service, on Green River lakes, and guided big game hunting parties last fall, left Granger May 21 to open up summer camps. For the benefit of campers this season he has installed double room cabins, one 16-foot motor passenger boat, four row boats, with outboard motors, 40 head of well broken saddle and pack horses. Hobson has under way a large hotel to be completed in 1928. This will be one of the most up-to-date dude camps in Wyoming when completed, fully equipped to handle any large number of guests and would make an ideal summer home for Governor Emerson or President Coolidge. This camp will be open for big game season on elk, moose, mountain sheep, etc. Hobson, a hunter of wide experience, in Maine and foreign countries, is a pleasant host and a square shooter. Green River lake is situated near the headwaters of Green River about 150 miles north of Opal, and lies among the prettiest scenery in Wyoming. A fine highway leads to the camp. Phone and radio service keeps those miles from the railroad in touch with the outside world."

Pinedale Round Up June 9, 1927

1928

**GREEN RIVER LAKE LODGE
WILL BE POPULAR RESORT**

The editor was at Green River Lake lodge over Sunday night and was much impressed with the scenic grandeur of the spot where Mr. Hobson is starting his tourist resort, and with the splendid manner in which all buildings constructed so far are built and with future plans to provide accommodations for the many who will wish to visit this wild wonderland.

The location of Mr. Hobson's lodge is in the tall pine trees on an elevated point overlooking the lake with "Old Square-Top" in the center background of the towering peaks that enclose the lakes.

Buildings are all being constructed of green peeled logs, rustic style, and contain rustic furniture made there. Two duplex cabins, 14x24 are completed and a single cabin 14x14 almost ready for occupancy. Logs are all ready to start a large building to be used for a cook house and dining room, and it is expected that this building will be completed this fall. The club room planned for construction next summer, will be a wing from the dining room of the other building.

Mr. Hobson has a good outfit of riding and pack saddles, horses and camp outfit to accommodate hunting parties and summer camping parties.

There are fine public camping places adjoining Mr. Hobson's grounds and these are being extensively used this summer in the absence of cabin accommodations at the lodge, of which there will be more next summer if plans materialize.

Pinedale Round Up August 23, 1928

In 1926, W.N. Hobson acquired a lease from the U.S. Forest Service for land on Green River Lakes. In 1928, Green River Lake Lodge dude ranch operations began, managed by Hobson.

1931

KENDALL KOLUMN

January 26, 1931

Jeannette Showers has been absent from school the past week, due to having the mumps.

H. E. Klein was a visitor in this section the last of the week.

Spencer Reynolds visited friends in this section several days this week.

Mike O'Black was a visitor at Spencer Hecox's Saturday.

Ted Dew and Spencer Reynolds visited at W. P. Dew's Friday.

Mr. Hobson and sister made a trip to Green River Lake with a car last week which is very unusual for this time of year.

January 29, 1931

Chips to Fly Soon at Green River Lake Lodge

Mr. Hobson of Green River Lake Lodge is here gathering up his crew expecting to go to the lake tomorrow and start chips to flying. The lodge is booked full for July and August and he expects to have everything in perfect order by June. The lodge is to be called Gannet Peak Lodge from now on.

April 16, 1931

W. N. Hobson of the Gannett Peak lodge, Green River lake, was a business visitor to Pinedale Tuesday. Mr. and Mrs. Hobson are now at the lodge for the summer and further improvements are being made to care for the large tourist business in prospect there for the summer.

Pinedale Roundup

April 23, 1931

Mr. Decker of Salt Lake is spending some time at Green River lake. Mr. Decker is very interested in getting the Gannet Peak Lodge all ship-shape for the busy summer.

April 30, 1931

When Hobson was unable to meet financial obligations during the Depression, Stanley Decker, a Utah banker and partner with Hobson, assumed complete ownership of the Green River Lake Lodge. Decker incorporated the lodge into the Gannett Peak (or G-P Bar) Ranch. source: "Archaeology & Homesteads" pamphlet, A. Dudley Gardner, [2012 - Wsimg.com](http://2012-Wsimg.com)

Pinedale Roundup
November 5, 1931

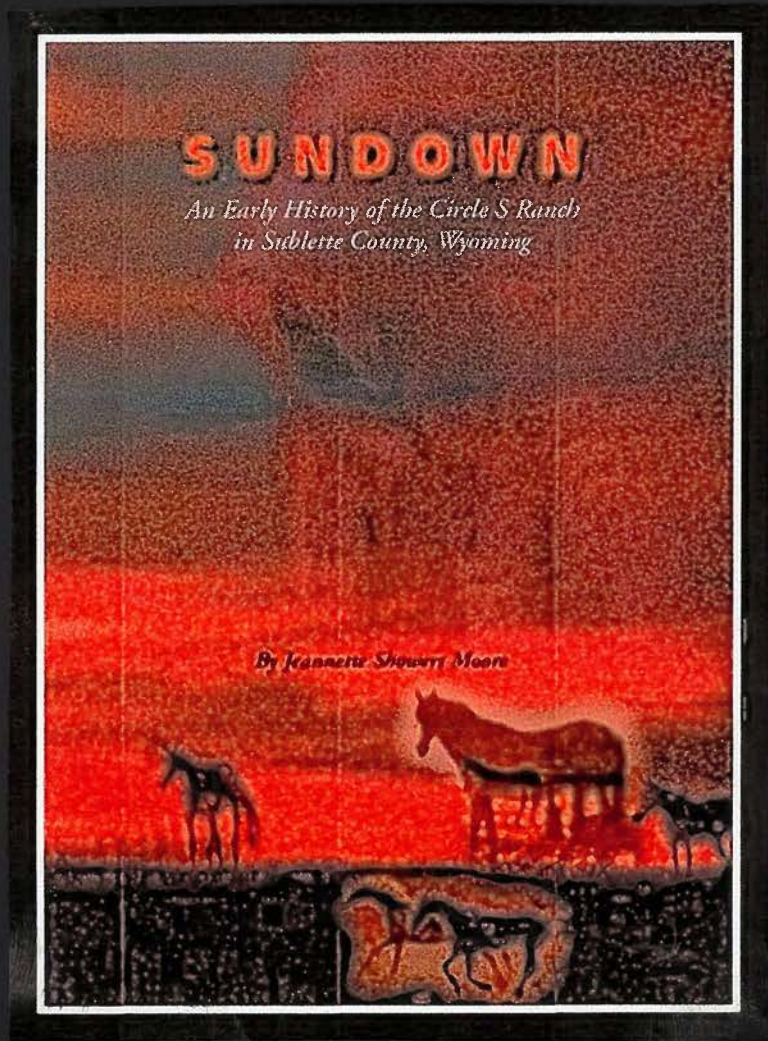
DEMPSEY PARTY GET TWO MOOSE

Governor Balzar of Nevada and Jack Dempsey, former heavyweight champion of the world concluded their moose hunt in the Gannett Peak region of Green River lake, in northern Sublette county the latter part of last week. Jack himself and James C. McKay, Nevada silver mine operator were successful in bagging two excellent specimens of that particular variety of big game.

Governor Balzar was compelled to quit the hunt and proceed to Portland, where he is attending a western states governors' convention this week. Accompanied by Matt Penrose, warden of the Nevada State Penitentiary, he arrived in Kemmerer Saturday evening, and early Sunday proceeded by motor for Portland (allowing only two days for the lengthy overland journey).

The remainder of the party, including Dempsey, emerged from the hills Monday morning last, and hurried to Salt Lake. The party, in two large cars, arrived in Kemmerer late in the afternoon, but stopped only long enough to obtain gas, after which they detoured via Granger to avoid the greasy roads, due to the storm, leading south and west of this city. Dempsey was elated over his getting a moose, and felt in fine spirits on his arrival here. He had to make a visit to Salt Lake and Reno before proceeding to Chicago, where he was due to arrive November 1. Stanley Decker, proprietor of Gannett Peak ranch, who was host to the distinguished party, accompanied Dempsey to Salt Lake. He will not return to the ranch this winter, the season having been formally closed at the famous dude ranch several weeks before the arrival of the hunters. W. H. Showers, one of the caretakers of the ranch, drove a truck as far as Kemmerer bearing the moose, which were shipped by rail from this point. When Dempsey arrives in Chicago he will confer with J. J. Johnston, Madison Square Garden promoter, relative to a bout with either Victorio Campolo or Primo Carnera, leading up to a championship match, if he so desires.—Kemmerer Gazette.

1931



SUNDOWN: *An Early History of the Circle S Ranch in Sublette County, Wyoming*

Published by Jeannette Showers Moore

in cooperation with the Sublette County Historical Society, 2007

Notes from Chapter 23

In Spring 1931, Jeannette's parents Florence and William Showers went to work for the GP Bar. Her older brother Harold had already done some logging work for GP, and now more guest cabin construction was getting underway. Mr. Showers was manager overseeing construction, and the Mrs. was cook for the crew and anyone else who happened along. Jeannette, aged 13, came along as go-fer running errands for Mom and being chief dishwasher.

The Showers family had sleeping quarters upstairs in the Lodge building, the only two-story structure at the Ranch. Later that spring, Wally Knutson was hired on as handyman, his wife Marge as assistant cook, and accompanying them was daughter May, about Jeannette's age.

During the summer, the GP Bar crew consisted of 15 or more people including two girls that cleaned cabins and waited table. The Decker family of 6 added to that number and the dudes amounted to forty people during the summer. Meals were served family style. With the cups and saucers, soup bowls, bread and butter plates and dessert dishes, there were gobs of dishes. The waitresses did the glasses and silverware and there was plenty for everybody to wash.

This chapter about the GP Bar also includes some good little stories about orphan bear cubs, horse wrangling chores and more. Here are some pages of this wonderful book. The book in its entirety is for sale at the Museum of The Mountain Main, Pinedale, Wyo.

1931

JEANNETTE SHOWERS MOORE



The Lodge at the GP Bar Ranch.

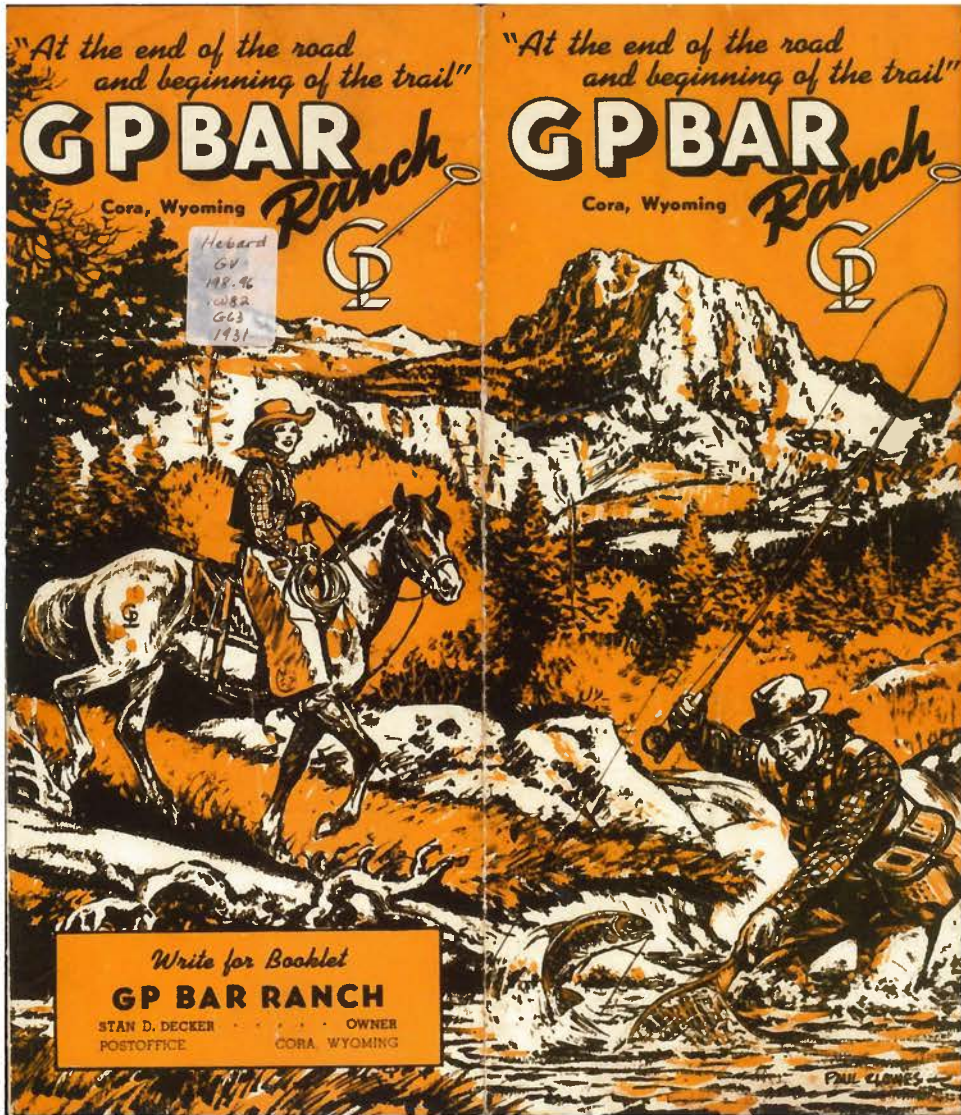
Evenings after the dinner was over and the chores done, chore boys, wranglers and all of the girls were still chuck-full of energy and we were always finding something to do to spend the evenings. We rode horses on the mountain trails until dark most evenings, but rainy nights we spent in the Commissary drinking pop, playing the nickel slot machine, and just "hanging out." There were souvenirs, pop, candy and gum, knick-knacks and riding gear. May and I were the youngest and sometimes we didn't fit in too well with the older kids' games, so we did our young stuff.

Mom did have a little leisure time, with Marge to take a share of the kitchen work, so in the afternoon she visited with the ladies and played some bridge with them. In spite of the long hours and hard work, she enjoyed the people and the recreation. The dude ladies went for horseback rides and did a little fishing, but enjoyed

SUNDOWN: AN EARLY HISTORY OF THE CIRCLE S RANCH

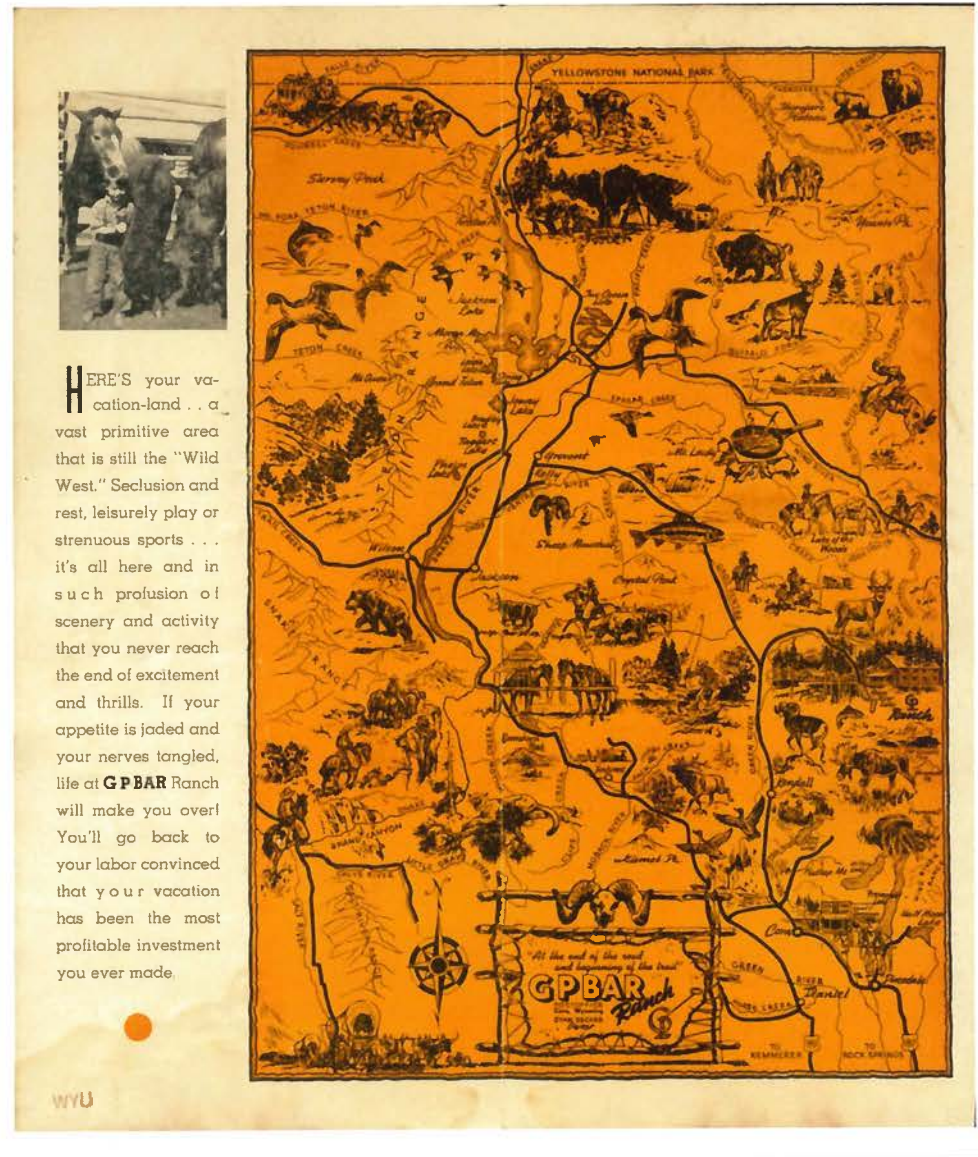


My first job, at age thirteen, was dishwasher at the Gannett Peak (GP Bar) Ranch in 1931. The small log building on the right is the dining room and kitchen for the hired help. The lodge is the larger building to the left.



(outside cover)

1931 GP Ranch Folded Brochure
(inside cover)



1931 GP Ranch Folded Brochure - centerfold

All the comforts of Home in the Heart of a Wilderness



The youngsters have as much fun as the grown-ups . . . swimming, boating and riding gentle horses. For camera shots that you'll prize through the years, come prepared with plenty of film. Both scenic and human interest subjects challenge your skill.

Unsurpassed Scenic Beauty

Rugged mountains, crystal streams, glacial lakes and untouched regions of forests and flowers, abounding in fish and wild game . . . far remote from the habitations of men . . . at a mile-and-a-half elevation . . . describes the setting of this beautiful and restful vacation place. America offers no finer attraction for men and women who love to be in the heart of a wilderness.



Even the novice can fill his creel in the streams and lakes of this remote mountain country . . . while the expert angler can match his skill against the wariness of the elusive "big fellows" in the more remote spots.

GP BAR Ranch, located on beautiful Green River Lake, on the fringe of the Bridger primitive area in the Wyoming National Forest, is the perfect place for rest and recreation. If you love to revel in the beauties and novelties of Nature, here you have them on a vast scale and in endless variety. Lovely fresh water lakes, with facilities for boating, are only a stone's throw away. Streams for fishing are everywhere.

The chief diversion is, of course, horseback riding—for **GP BAR Ranch** is typically "western," with real cowboys, wrangling paraphernalia, and scores of well-trained mounts. You can select a saddle that fits, a horse you like and ride any one of the many chartered trails. Pack trips can be arranged, with excellent guide service and camping outfits.

For full details write to
STAN. D. DECKER
owner
GP BAR RANCH
Cora, Wyoming

GP BAR Ranch is equipped to take care of 35 guests. It offers every comfort and convenience of the better hotels or clubs. The meals are excellent, cooked in the true ranch style, with an abundance of fresh milk and cream from the ranch dairy, fresh butter, eggs and vegetables.

The Ranch furnishes all equipment for hunting parties, excepting rifles, ammunition and hunting license. If fishing is your sport, come prepared to cast for Rainbow, Eastern Brook, Cut Throat Golden Grayling and German Brown Trout. The lakes and streams are many and "the big fellows" are always abundant. Our railway station is Rock Springs and Kemmerer, Wyoming. Ranch cars will meet you by appointment.



Green River Lake . . . Old Square Top in the background.

Many guests of **GP BAR** sign up for a pack trip, losing themselves for a few days in a distant wilderness, well "chaperoned" by experienced guides and wranglers, roughing it in ease, enjoying good meals and sleeping on fine beds under the stars or in cozy tents.



Ready to turn a wild one out of the chute!

There's the real atmosphere of the Old West at this famous Ranch . . . pole corrals, spirited horses, the snap of leather and the drawl of western cowboys. It's fun merely to be an on-looker when the horses are being saddled—but it's more fun to get astride and ride one!



GP BAR Ranch Cabins are planned and furnished to be in keeping with the picturesque environment. The beds are luxuriously soft and immaculately fresh and clean. There are electric lighting and modern plumbing, with baths and shower baths available to all guests.

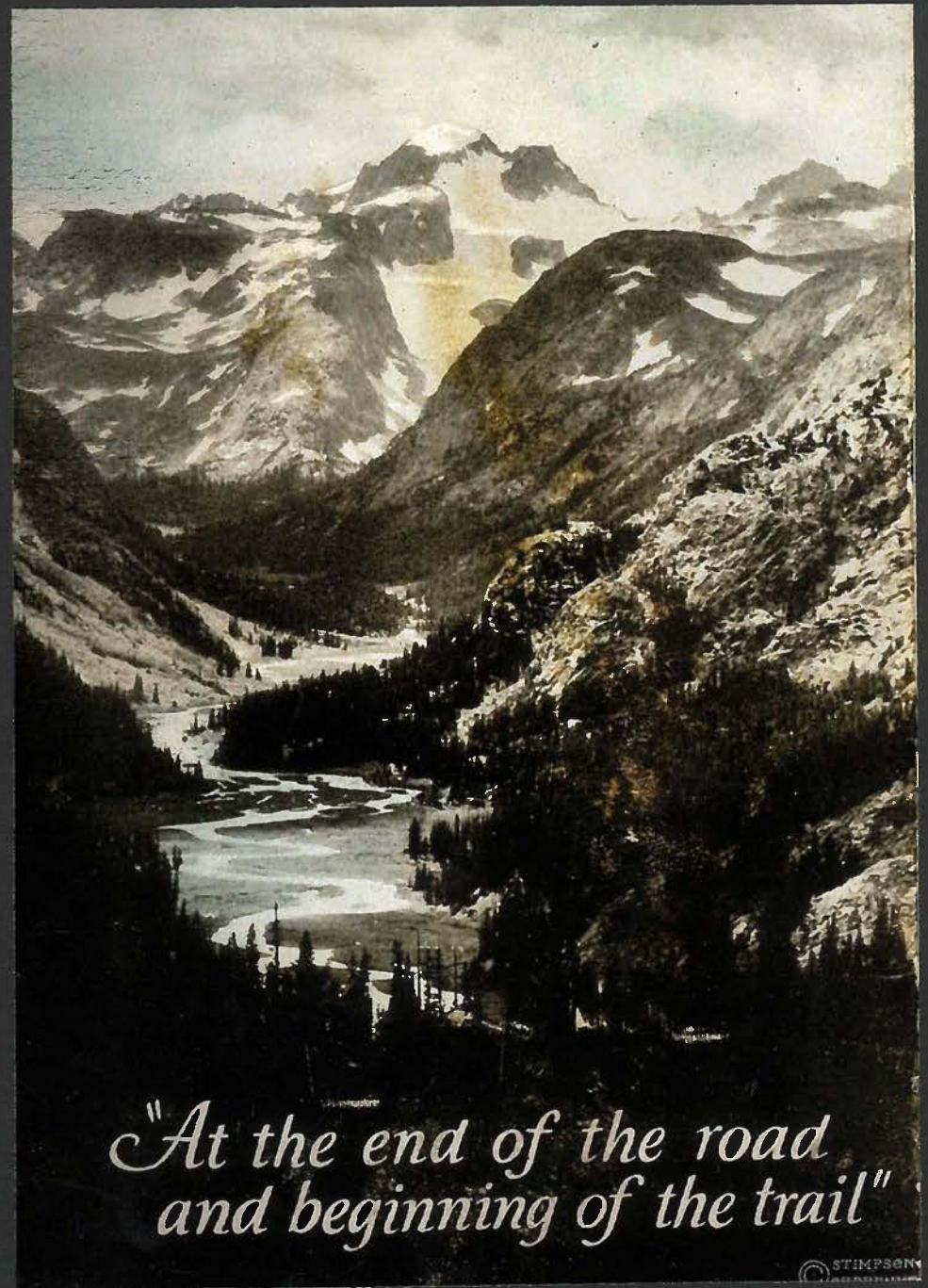
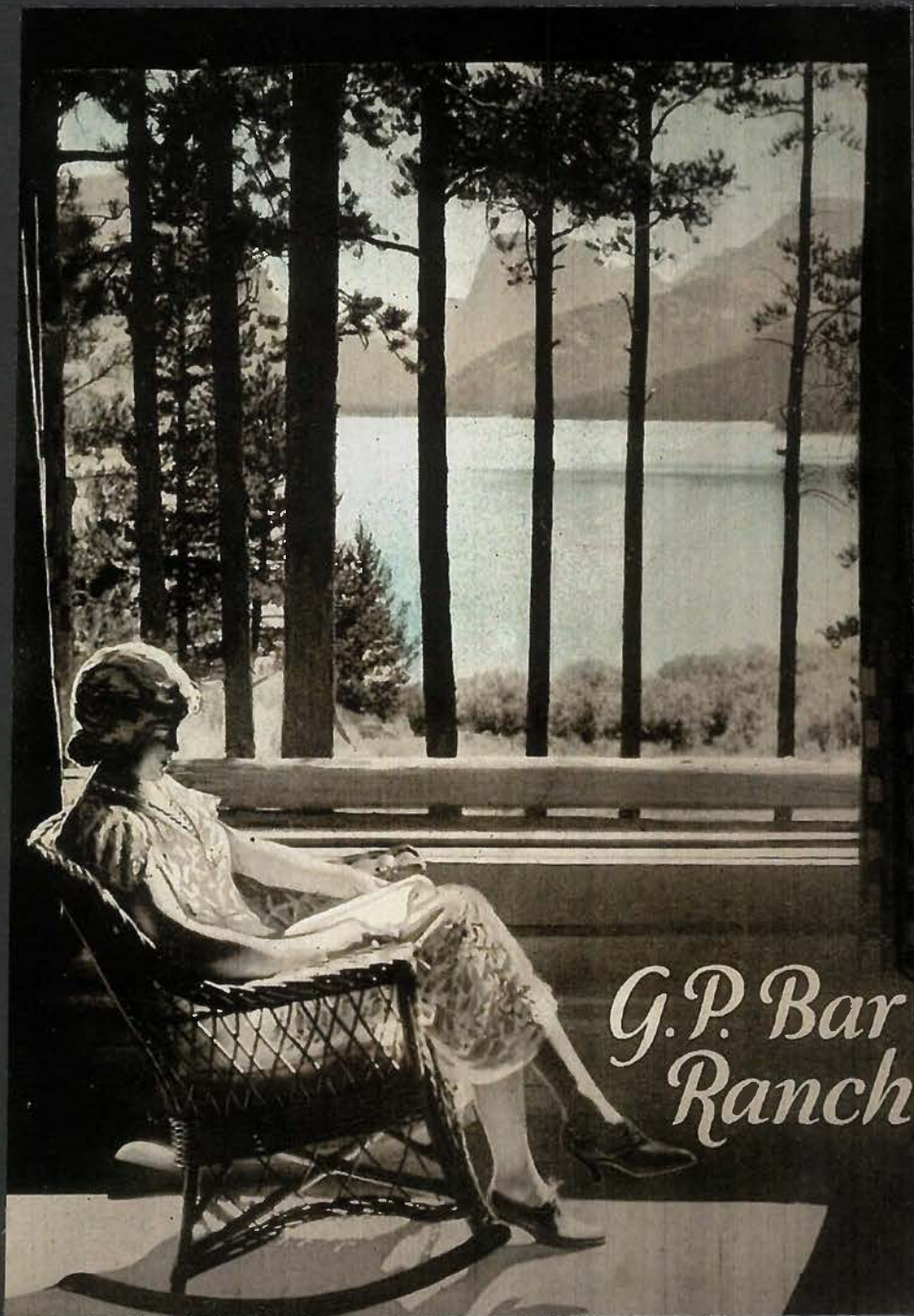
Rustic But Luxurious

The main Ranch House and Trading Post is the center of all social activity. Here you get your mail, make telephone calls, purchase the incidentals you need or mingle with friends. The cabins are all conveniently located with reference to this delightful rendezvous. The spacious Ranch House is everybody's "home"—and half the pleasure of your stay centers around it!

Wild life is everywhere encountered along the lakes, in the forests and high on the mountain sides of the **GP BAR Ranch** country. Elk, deer, mountain sheep, and many varieties of feathered game are "at home" up here.



1933 G.P. Ranch booklet - covers



G.P.



Spaciousness and Privacy with Individual Cabins.

G.P. BAR RANCH is one of the most outstanding summer ranch resorts in the state of Wyoming. Its excellent accommodations and service are contrasted by the rugged out-of-door life. Here one may enjoy the splendid summer climate, entering into the healthful ranch activities, yet living comfortably as at home.

Scenically, the country around G. P. Bar Ranch is ideal. Located in the Wyoming National Forest, deep in the heart of the Rockies, lies a region of unsurpassed beauty—"At the end of the road and the beginning of the trail." It is the "Last Frontier," far from the beaten path, a land of unchanged beauty. A country without fences; the great open range where cowboy and Indian still ride the trail.

Nature has been lavish with her gifts to this region; dawn flaming over the hills in spectacular glory, ushering

G.P.

a new day in which one marvels at Nature's own. Snow-capped mountains, beautiful valleys; boundless forests of spruce and pine; here imbedded as a jewel, lie Green River Lakes (the source of the historical Green River), which mirror and reflect the magnificent dignity of Old Square Top Mountain, towering thirteen thousand feet, capped with perpetual ice and snow. Nature's Sculptors, the mighty glaciers, send down their torrents of crystal water in streams which feed the lakes.

The ranch "outfit" will leave nothing undone to make your visit healthful and happy, and when you leave, like many others, you will often be reminded of the days spent here, and will recall the pleasant companionships, evening campfires along the creek bottoms, dewy mornings on high plateaus, the smell of sage and pine, sunlit days, nights where stars are close and friendly, memories of a favorite horse.

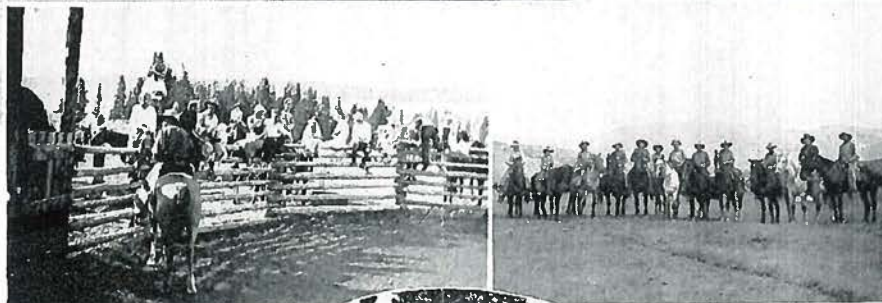
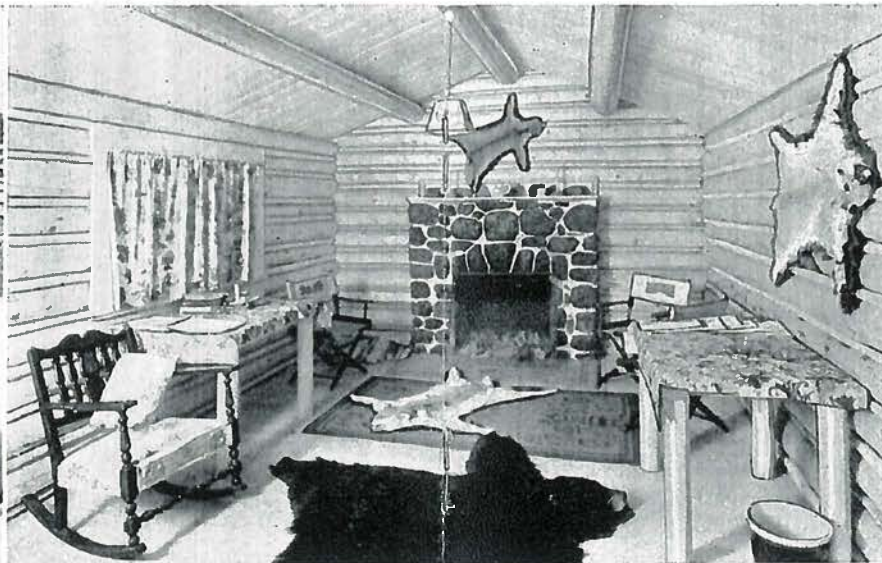


Rustic Comfort is the Keynote at G. P. Bar Ranch House.

AMERICA'S LAKE LOUISE — NATURE'S PLAYGROUND



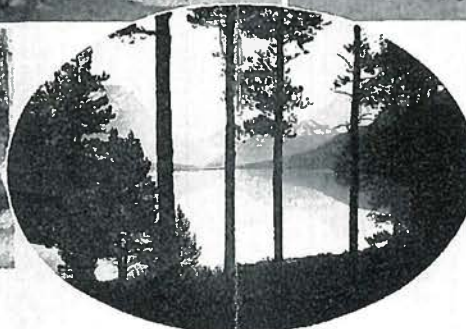
(Upper)—A Boy's Haven
(Center)—A Nice Catch
(Right)—At the Corrals



(Upper)—Branding Calves
(Center)—Throwing a Horse for Branding
(Left)—Starting a Day of Real Sport



Through the Pines



(Upper Center) — View of Living Room, Guest Cabins



A Trip to Old Squaro Top by Water

GP



Main Ranch House is the Center of All Activity.

STORE

The trading post or store, houses the office and will provide necessities, tobaccos, cigarettes, candies, ammunition, fishing tackle, camera accessories, and drug sundries; various other miscellaneous items can be purchased here.

MEDICAL AID

An experienced physician or trained nurse is available at the ranch during the guest season. Telegrams or telephone calls are sent to Rock Springs, Wyoming, and are telephoned from there to the ranch. Mail or parcel post should be addressed to G. P. Bar Ranch, Cora, Wyoming.

MOTOR CAR TRANSPORTATION

Motor cars and drivers, for short trips, or to Yellowstone National Park, Grand Teton National Park, Jackson Hole and other points of interest, are provided for the use of the ranch guests, at a reasonable charge.

HOW TO GET TO THE RANCH

Our railroad station is Rock Springs, Wyoming, on the Union Pacific System, providing excellent service from Chicago, St. Louis, Kansas City, Omaha, Twin Cities, Ogden, Salt Lake City, Denver and Pacific Coast points. From Rock Springs by motor stage over Hoback Canyon Highway to Pinedale, then ranch cars to G. P. Bar Ranch.

Ranch cars will meet you at Rock Springs by arrangement. Any Union Pacific, Chicago & Northwestern or Wabash ticket agency will give detailed information as to reduced fare round-trip tickets on sale from approximately May 31st to September 30th, good returning until November 15th.

Rates at G. P. Bar Ranch include lodgings, meals, saddle horses, saddlery, use of boats and guide service for short trips. In applying for reservations, please advise the number in your party and the proposed length of your visit. An exchange of references is desirable.



The Moose is Quickly Skinned.

In 1937, Margaret Henderson worked for the GP Bar ranch as a cook's assistant. In the process, she took many trail rides all over that country. Captions are inscribed on the front of the photographs in her album, and some are hard to read because she used white ink.

Margaret was born in 1917 in Malad, Idaho, and graduated from Albion Normal School in June 1936. At that time, Albion was one of the two State - established teacher training schools in Idaho. Evidently she chose to be a cowgirl for awhile instead of a teacher. These photos were provided by her daughter Janet Wilcox of Blanding Utah.



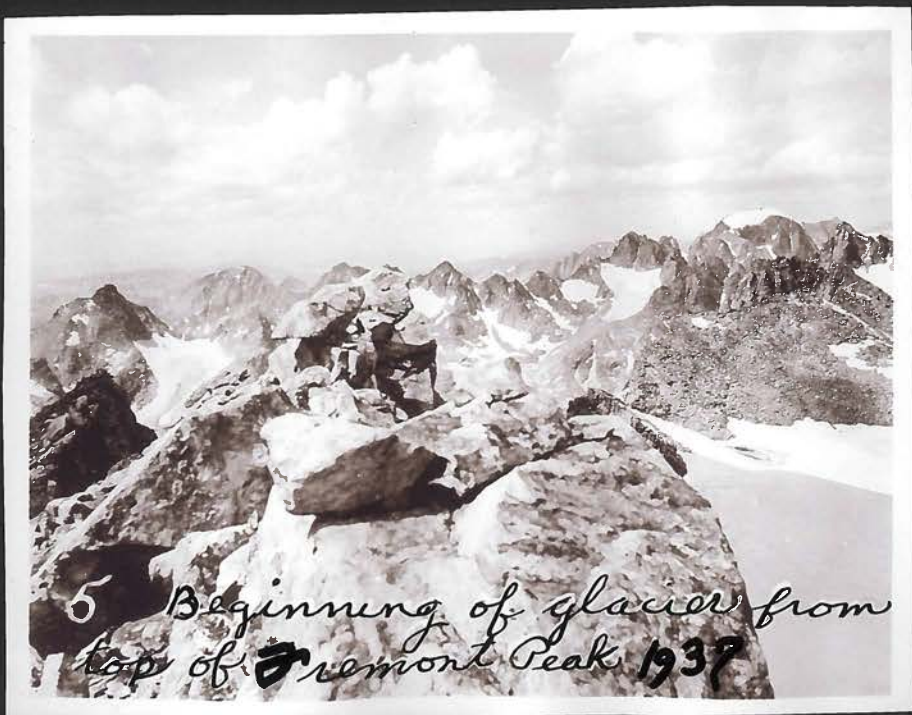


Margaret Henderson at GP
1937



"Bill" at "nap time". 1937

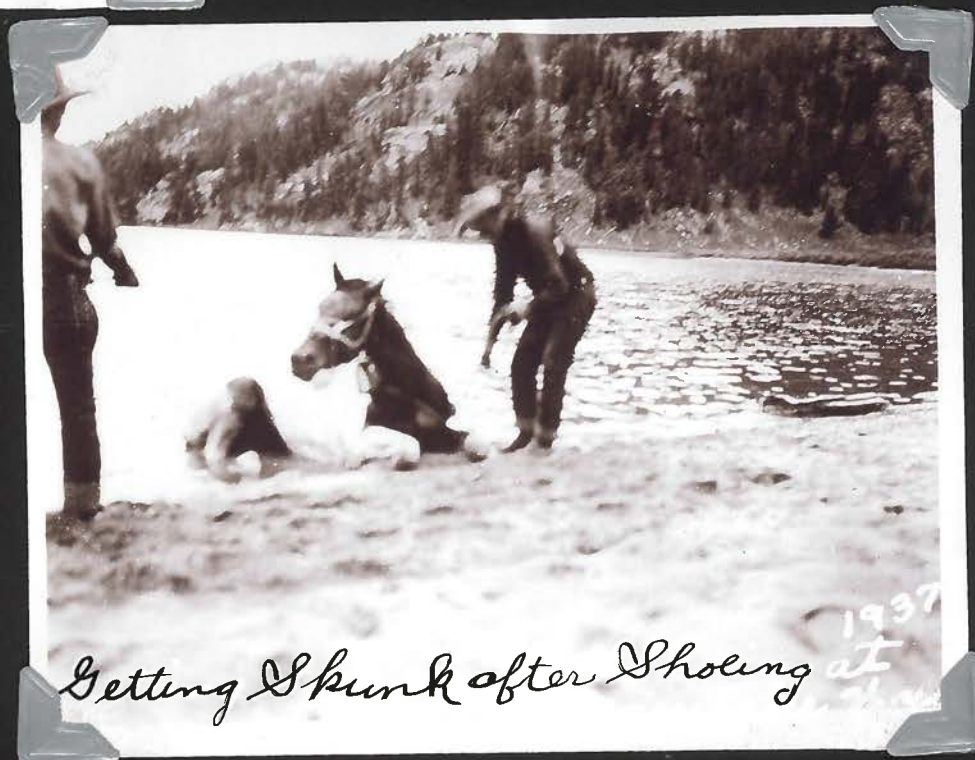
Elk "Bill" at the GP Lodge



Margaret Henderson photos



"Shoeing old Skunk" Section Corner
Lake on Trail Rider Trip 1937 (Ago.)



Getting Skunk after Shoeing at
1937

Margaret Handerson photos



E. P. crew 1937

Smokes
Harry
Lube
Mark
Dow
Duke
Carr

Trail Riders



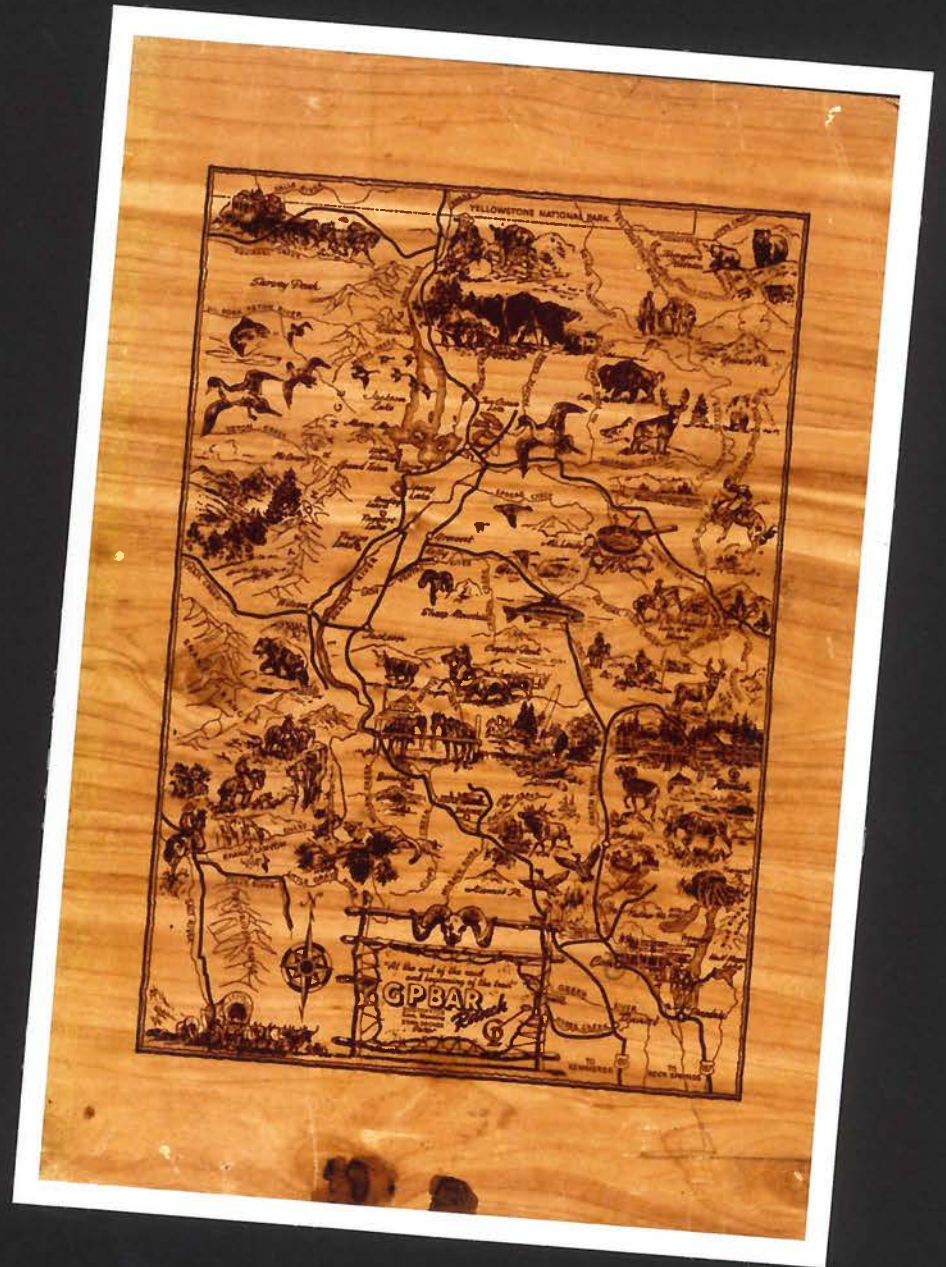
Trail Riders 1937 at Porcupine
crossing of Green River, Wyo.



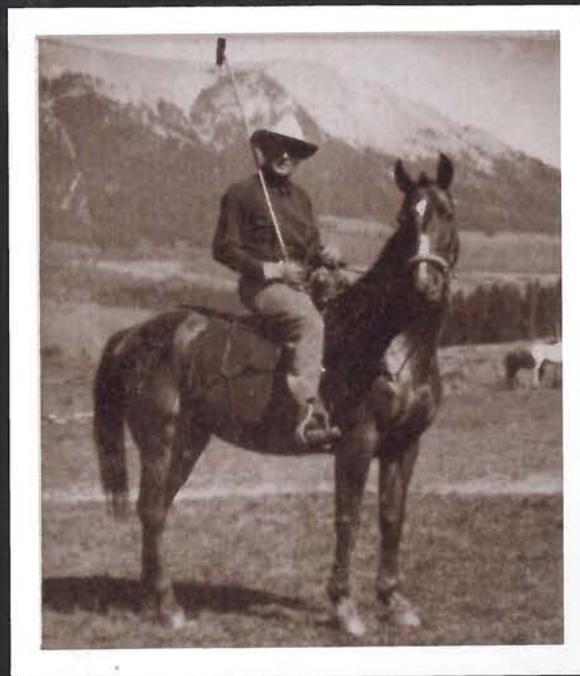
GP Trail Rider covey fording
Green River, Wyo. 1937

Margaret Henderson photos

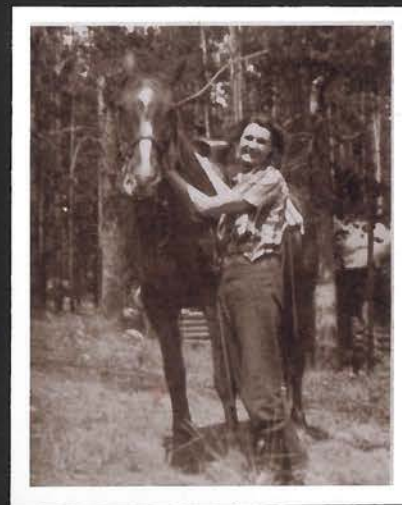
1941 Booklet covers



(1941 Booklet)



Stan D. Decker Sr.



Vilate Decker



Stan Jr. & Naomi



Joyce & Bette Teame



Viv

Something to talk

New experiences, laughter and friendship are all part of a vacation at the G P Bar. We might spend the day at the roundup to see the cattle branded. The skillful roping of the cowboys, midst the bellowing cows and calves, indeed adds color to the day. If you like a cold plunge in the water, the lake and sandy beach are just right. Often you like to go boating after swimming, to have a campfire dinner at the opposite end of the lake, to return in the moonlight which glitters on the water. One doesn't say much about the moon when it rises over Square Top; there just aren't words to express it.



THE ROUNDUP BEFORE BRANDING



about

What is really enjoyable is to visit the cow-camp and have dinner with the cowboys at the "chuck wagon." Food will never be so good and the evening, provided with songs from the cowboys will be a happy one for you . . . "Sage brush polo" is something you will find a great deal of fun. It was originated by college polo-players and cowboys, so as you may well imagine, the game has its own definite tang; you'll love it . . . Of course there are outstanding fishing trips, hikes, bonfires on the lakeshore, horse-back riding by moonlight, dances in the evening if you like and well, there is always enjoyment at G P Bar which is your home while you're there.



ENJOYING THE RODEO FROM THE CORRAL RAIL



SWIMMING—A STONE'S THROW FROM YOUR CABIN



CHUCK WAGON—WHERE FOOD NEVER TASTED BETTER



Riders at the GP Lodge (1941 booklet)

Image courtesy Emmett D. Chisum Special Collections,
University of Wyoming Libraries GV198.96.W82 G63 1941



Relaxing at the GP Lodge

Image courtesy Emmett D. Chisum Special Collections,
University of Wyoming Libraries GV198.96.W82 G63 1941



"WRANGLING AND READY" 'ROUND THE CORRAL

Across the river and out of the pines stands the G P Bar Corral and saddle shed, where your horse is saddled for you each morning. He will be a sure-footed and trail-wise animal and whether you're an inexperienced rider or an experienced one, you will find, from our eighty-five horses, just "the one" for you. Your horse will provide many pleasant memories of the ranch.

As you watch the cowboys around the corral you're sure to learn something of western horses. It is interesting to see how they are roped and trained.

The cowboys "wrangle" or "round-up" all the horses each morning to run them in the corral. Some of the guests enjoy being a wrangler themselves and experience the thrill of arising at the crack of dawn to ride the great open spaces with the cowboys in search of the "cavy."

A lot of riding is done at the ranch because there is no better feeling than that of riding along the trail, completely unaware that a care exists anywhere in the world.



Now that you have an idea of what nature offers you, you will be interested in knowing what can be done for your enjoyment . . . Our guests reside in individual log cabins of real comfort which are equipped with hot and cold water and electric lights . . . A skilled cook prepares good meals, having an abundance of fresh vegetables and fruit, and milk from the ranch dairy . . . The meals are served in the ranch house, where everyone gathers for sociability and entertainment . . . You will be pleased to know that your beds are of the very finest, that all your furnishings are made for true comfort and that, although you are situated in the heart of the wilderness, every comfort of home is combined with primitive nature.





Corral Interest (1941 booklet)

Image courtesy Emmett D. Chisum Special Collections,
University of Wyoming Libraries GV198.96.W82 G63 1941



souvenir playing cards



The house was built in the early '50s by Harrower and Taylor Contractors, later known as Highland Lumber Co. of Pinedale, for Stan Decker, owner of the GP Bar Ranch. Stan and Jim Harrower were quite good friends. Jim had extensive knowledge of the area and the rest of the Wind River range, having worked for the Forest Service and spent a great deal of time on the mountain trails in the early '30's. Jim's sons, Bob & Jim, helped collect many of the rocks used in the house. Felix Relinger and Shorty LaBarge were two members of the work crew.

Ruth Harrower Arnold



Decker Home
Lower Green River Lakes
Jack White photo
1952

Image courtesy Ruth Arnold



Rail Roads & Dude Ranching

Lazy days
on a Western
DUDE RANCH

UNION PACIFIC

Take a life of leisure every day in comfort on our best
mountain Dude Ranch in the Union Pacific West.

Special fun for the whole family... excellent accommo-
dations... fine, wholesome meals. In some sections, the
dude ranch season extends through the Fall.

Send to "Dude Ranches Out West," our new 32-page
booklet with illustrations in full color.

Complete information about dude ranches in Wyoming,
Montana, Idaho, Washington, Oregon, Colorado, Nevada
and California Mail the coupon below.

UNION PACIFIC RAILROAD
Head of the Daily Steamlines

Union Pacific Railroad, Room 210, Omaha 2, Nebraska
I am interested in a train trip to the following region. Please send information.

(Name region)

Name _____
Address _____
Street _____
City _____ State _____

1948

As a way of increasing their passenger traffic, railroads worked closely with the dude ranch industry since its very inception, creating and distributing attractive brochures highlighting an area's ranches.

advertisements - U.P.R.R.

Enjoy "a heap o' livin'" on a
WESTERN DUDE RANCH

This summer, step out of one way of living into another — a world of complete relaxation as big as all outdoors. A host of hospitable ranchers in the Union Pacific West invite you to incomparable regions of scenic delights, tonic sun, high-altitude "blanket" nights and fun galore for all the family.

To obtain the type of accommodations you desire, we suggest early action. Send for free booklet now!

UNION PACIFIC RAILROAD
Room 210, Omaha 2, Neb.
Please send free booklet "Dude Ranches Out West."

Name _____
Street Address _____
City _____ State _____

1940s

GO DUDE RANCHING
THIS SUMMER

Horseback riding is a major sport. Ever try it? No matter, you'll catch on quickly... and what a thrill it will be. Soon you'll hanker for a pack trip into the mountains, chuck wagon and all. And there's fishing nearby, with mountain trout as the prize.

You'll love it out there. Everyone does — youngsters, their elders and the in-betweens. The range country sweeps away to mountain horizons — perhaps to the mighty Teton or the snow-crested Rockies. The air is clear and invigorating — the sunshine bright. All outdoors seems to say, "relax — have a good time." The informality of it all is contagious... cares are soon forgotten.

So go this summer — and let Union Pacific take you. On its trains the rail journey is most pleasant. For air-conditioned comfort travels with you and all the conveniences of modern travel. Then, too, summer fares are very low, and in the Union Pacific West you'll find Dude Ranch accommodations exactly to your liking.

Send for 48-page book, "Dude Ranches Out West," a most complete directory of western dude ranches. It's free — mail coupon.

And this is to remind you: The Union Pacific serves 15 National Parks and more of the West than any other railroad, including Colorado, Yellowstone, Zinn-Bryce, Grand Canyon National Parks, California with Boulder Dam en route, the Pacific Northwest-Alaska.

W. A. BARNETT, Passenger Traffic Manager
Room 408, Union Pacific Building, Omaha, Neb.

Please send me information about _____
Name _____
Address _____
City _____ State _____
Clip _____
© 1937 Union Pacific Railroad, All-Express Train

THE PROGRESSIVE UNION PACIFIC RAILROAD

1937

Dude ranches arose in the American West beginning about 1880. They grew in popularity after World War I, spurred by postwar prosperity, the rise of the automobile and the appearance of Western movies on the screen. By 1930 dude ranching was a prominent industry in the West, dominated by the 100-plus establishments in the state of Wyoming.

DIRECTORY OF RANCHES

THE JACKSON HOLE RANCHES, WYOMING

RANCH	PAGE
Bar B C Ranch	5
Bar Double R Ranch	5
Bar "N" Ranch	5
Beet Paw Ranch	5
Broken Arrow Ranch	5
Circle H Ranch	6
Crescent H Ranch	6
Double Diamond Ranch	6
Jenny Lake Ranch	6
Moose Head Ranch	6
Ramshorn Ranch	6
Teton Sky Line Ranch	7
Teton Valley Ranch	7
Triangle X Ranch	7
Turpin Meadow Ranch	7
V Bar V Ranch	7
White Grass Ranch	7

WIND RIVER—GREEN RIVER RANCHES, WYOMING

Circle S Ranch	8
CM Ranch	9
Diamond G Ranch	9
Flying A Ranch	9
G P Bar Ranch	9
Hot Foot Ranch	9
T Cross Ranch	9
Z Bar U Ranch	10

CONTINENTAL DIVIDE AND SNOWY RANGE RANCHES, WYOMING

A Bar A Ranch	10
Boyer YL Ranch	10
H Bar V Ranch	10
Sky Meadows Ranch	10

MONTANA RANCHES

Elkhorn Hot Springs	11
Elkhorn Ranch	11
Haagen Y/P Ranch	11
Parade Rest Ranch	11
Seven L Ranch	11

IDAHO RANCHES

Boyle's Ranch	13
Elk Head Ranch	13
Idaho Rocky Mountain Ranch	13
J Bar Y Ranch	13
Pittsburgh Club	13
Redfish Lake Lodge	14
Robinson Bar Ranch	14
Slash E Ranch	14

OREGON RANCHES

Diamond-and-a-half Ranch	14
Lazy T Ranch	14
Triangle M Ranch	15
U. S. Bar Ranch	15

WASHINGTON RANCHES

Bar 4) Ranch	15
Lazy F Ranch	15
Methow Valley Ranch	15

All color illustrations in this book, including front cover, from Kodachromes by Photographic Department, Union Pacific Railroad. Union Pacific also publishes books, similar to

COLORADO RANCHES

RANCH	PAGE
A Bar H Ranch	18
Bluebird Lodge	18
Bridle Bit Ranch	18
Brockhurst Dude Ranch	18
Buckhorn Lodge (Bar Lazy J)	19
Camp Chief Ourey for Boys	19
Camp Shoshoni Camp for Girls	19
Chalet-Ranch	19
Colorado Camps	19
Cheley U Ranch	20
C Lazy U Ranch	20
Coulter Lake Guest Ranch	20
Crystal River Lodge	20
Drowsy Water Ranch	21
Fisheranch	21
The Focus Ranch	21
Graham's Lost Valley Ranch	22
Hawk's Nest Ranch	22
H Bar G Ranch	22
Holzwarth Ranch	22
K Z Ranch for Boys	22
Lake Trail Guest Ranch	22
Lodge of the Pines Ranch	23
Lone Cow Ranch	23
McGraw Ranch	23
Marshdale Lodge	23
Onahu Ranch	23
Perry-Mansfield Camps	23
Phantom Valley Ranch	24
Railton Creek Ranch	24
River Cliff Ranch	24
Saddle Pocket Ranch	24
Saddle String Ranch	24
San Luis Ranch	26
Shadow Mountain Ranch	26
Shoehoe Ranch	26
Snowshoe Ranch	26
Spotland Valley Guest Ranch	26
Sprague's Lodge	26
Spread Eagle Ranch	27
Stapp's Lakes Lodge	27
Stead Guest Ranch	27
Tarryall River Ranch	27
T Bar S Guest Ranch	27
Tee-La-Wukel Ranch	27
Trail Creek Ranch	28
Triangle L Ranch	28
Tumbling River Ranch	28
U T Bar Ranch	28
Wind River Ranch	28

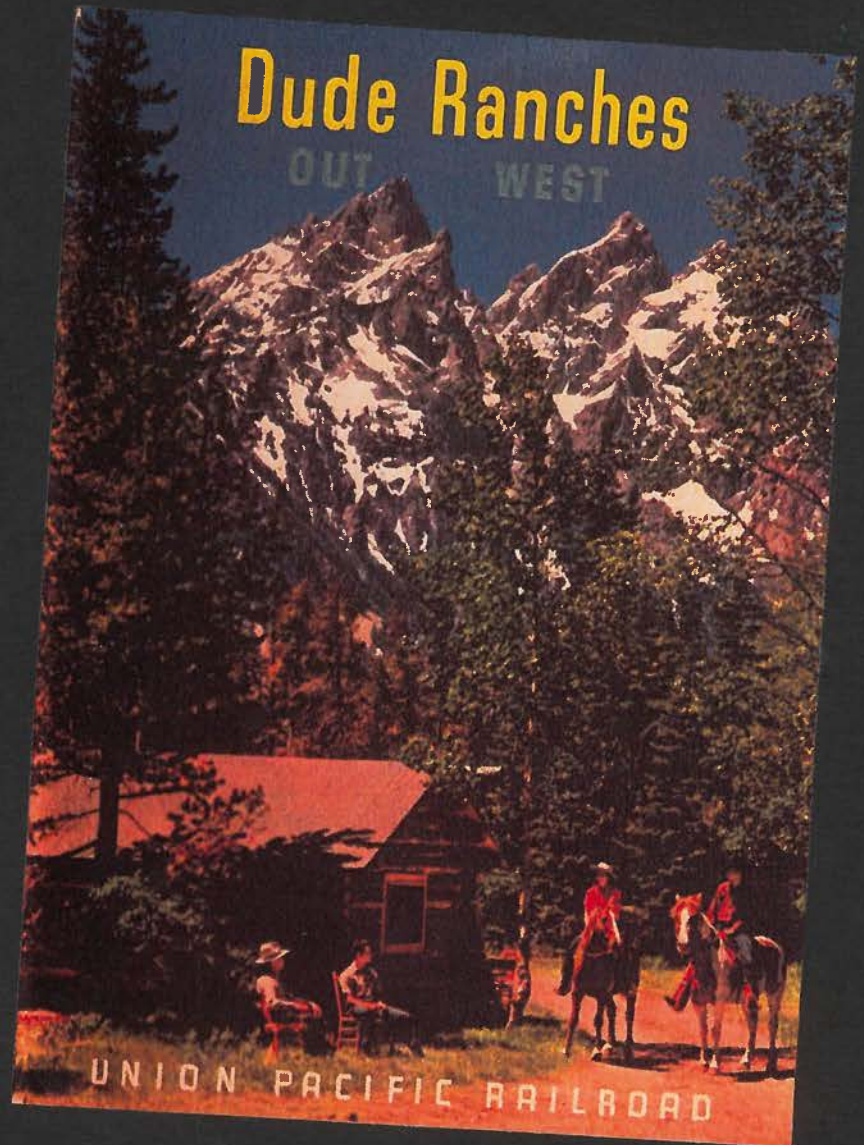
NEVADA RANCHES

Ash Meadows Ranch-O	28
Boulderado Ranch	28
Gunnerson's (Bar W) Ranch	29
Hidden Well Ranch	29
Mt. Charleston Ski Bar Ranch	29

CALIFORNIA RANCHES

Allsal Ranch	29
B-Bar-H Ranch	30
Furnace Creek Ranch	30
Irene McCarthy's Guest Ranch	30
La Paz Guest Ranch	30
Mac Ranch	30

this, on the following western vacation regions: California, Colorado, Pacific Northwest, Alaska, Zion-Bryce Canyon-Grand Canyon National Parks and Yellowstone-Grand Teton National Parks



Union Pacific Railroad 1947 booklet pages

1955 UPRR

families have for years been spending their vacations at these ranches, as they prefer this type of vacation to all others.

Each ranch has its "brand" which is a letter, insignia, or often the initials of the owner. It is a mark which is "branded" or burned into the hides of all the stock on the ranch for the purpose of identification. Many of the individual ranch brands are shown in this book.

A dude ranch is an ideal place to make new and congenial friends, for, as was stated before, most ranchers exchange references and will take in only folks of good character who get along well with others.

What to Expect

No two ranches are alike. Some are large "operating" ranches where cattle are "run" and ranching is carried on the year 'round regardless of guests. Another type is especially planned for visitors during the summer. Still another is the mountain "lodge" or "resort" where perhaps fishing might be featured.

Practically all ranches charge by the week, which charge includes your cabin or room accommodations, your meals, saddle horse (in some cases quoted extra) and all the numerous services which the ranch furnishes in order to make your stay both comfortable and interesting. It is, in fact, an "all-expense" proposition and should be considered in that light.

A dude ranch vacation usually includes a lot of horseback riding along scenic mountain trails, and in addition

fishing, swimming, dancing, picnicking, moonlight rides to steak fries and wiener roasts, chuck-wagon dinners, and in general entering into the life of a real western cattle ranch. For the elderly or the not-so-ambitious type, most ranches have inviting lounges with library, radio, (television in some areas), and broad, sun-swept verandas for just "taking it easy." Some ranches arrange automobile sight-seeing trips to near-by spots of scenic interest, Indian reservations, or rodeos held round-about.

The food served on a western dude ranch is plain, well-cooked and in ample portions. It cannot be likened to a hotel or summer resort in this respect for western appetites call for something quite substantial. Guests are usually served "family" style. The ranch truck garden provides fresh vegetables for the table and the dairy herd furnishes an abundance of rich milk. Some ranches supply their own beef. After a day in the open you'll find yourself "stowing away" this wholesome ranch food like one of the regular "hands."

In the evening there is likely to be informal entertainment, card games, singing and dancing in the central lodge. On many ranches, Saturday night is the night to go to the neighboring town for the barn dance, and visit with wranglers and guests from other ranches.

What to Wear

Felt hats, wool shirts, khaki trousers, riding breeches or heavy slacks and stout walking shoes are about right for ranch life. The popular "Levis" (overall pants) and western boots, as well as

GP

G P BAR RANCH. Location: Cora, Wyo. Elevation 8,000 feet. Take Union Pacific to Rock Springs, Wyoming, where guests are met with ranch car by appointment.
Accommodations: For thirty-five guests. June 15 to October 15.
Activities: Riding, fishing, hunting in season.
Rates: Rates and information by request to Stan. D. Decker, Cora, Wyoming.



more elaborate western costume clothes, may be purchased at many ranches or in western towns. Keep in mind cold nights, warm mid-day sun, possible rain and snow in high altitudes, and outfit accordingly. But don't let your wardrobe bother you too much! Just keep it simple and western.

Taking the Children

Growing children thrive on the care-free, outdoor life; the delicious, well-cooked food, topped off with all the rich milk they can drink. It gives them new zest and keenness, too, so, by all means, take 'em along! Some ranches make special family rates.

Hunting and Fishing

Practically all ranches offer excellent fishing near by, or pack trips to more remote lakes and streams, if you wish. Big game hunting in season is also fea-

tured by many ranches, some even going so far as to guarantee "the bag."

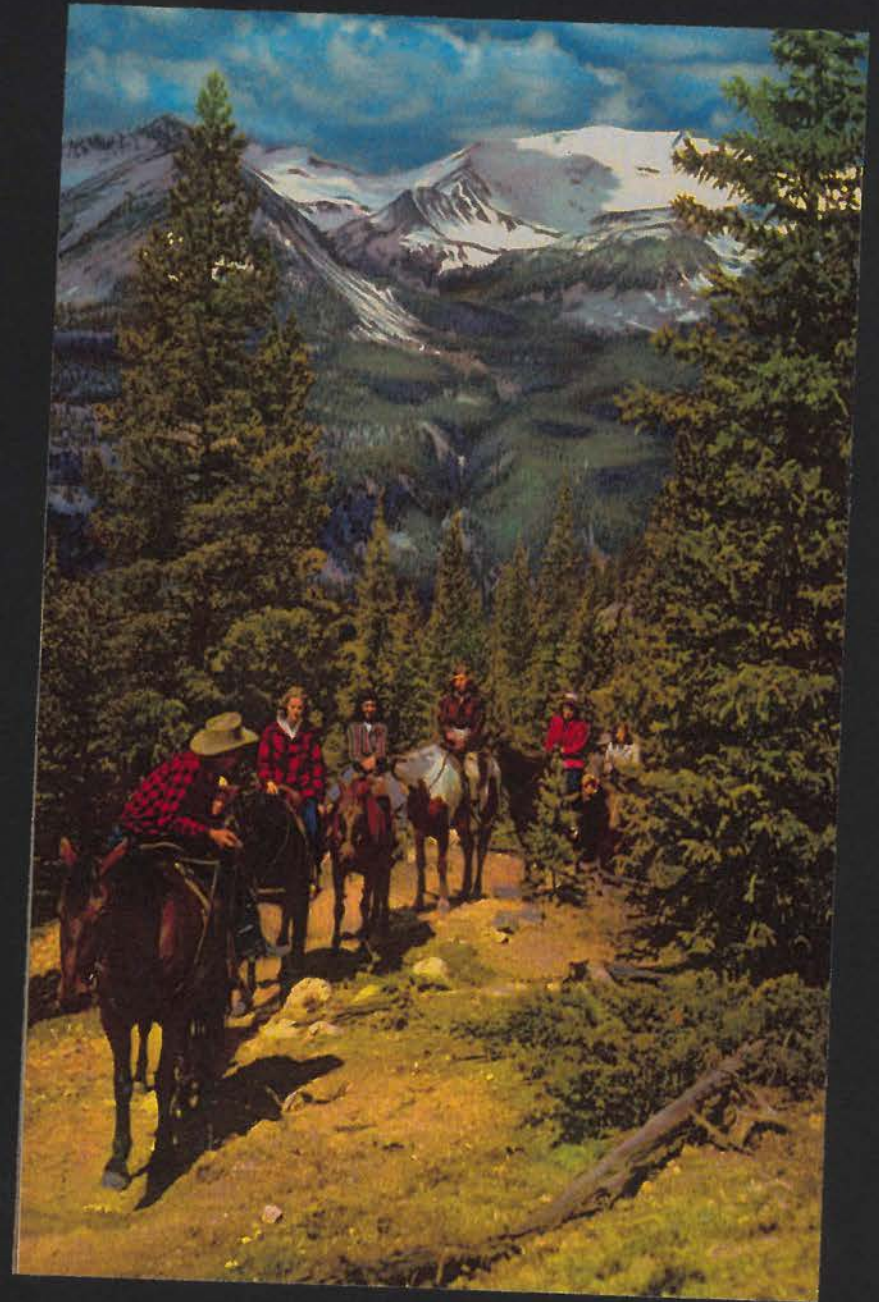
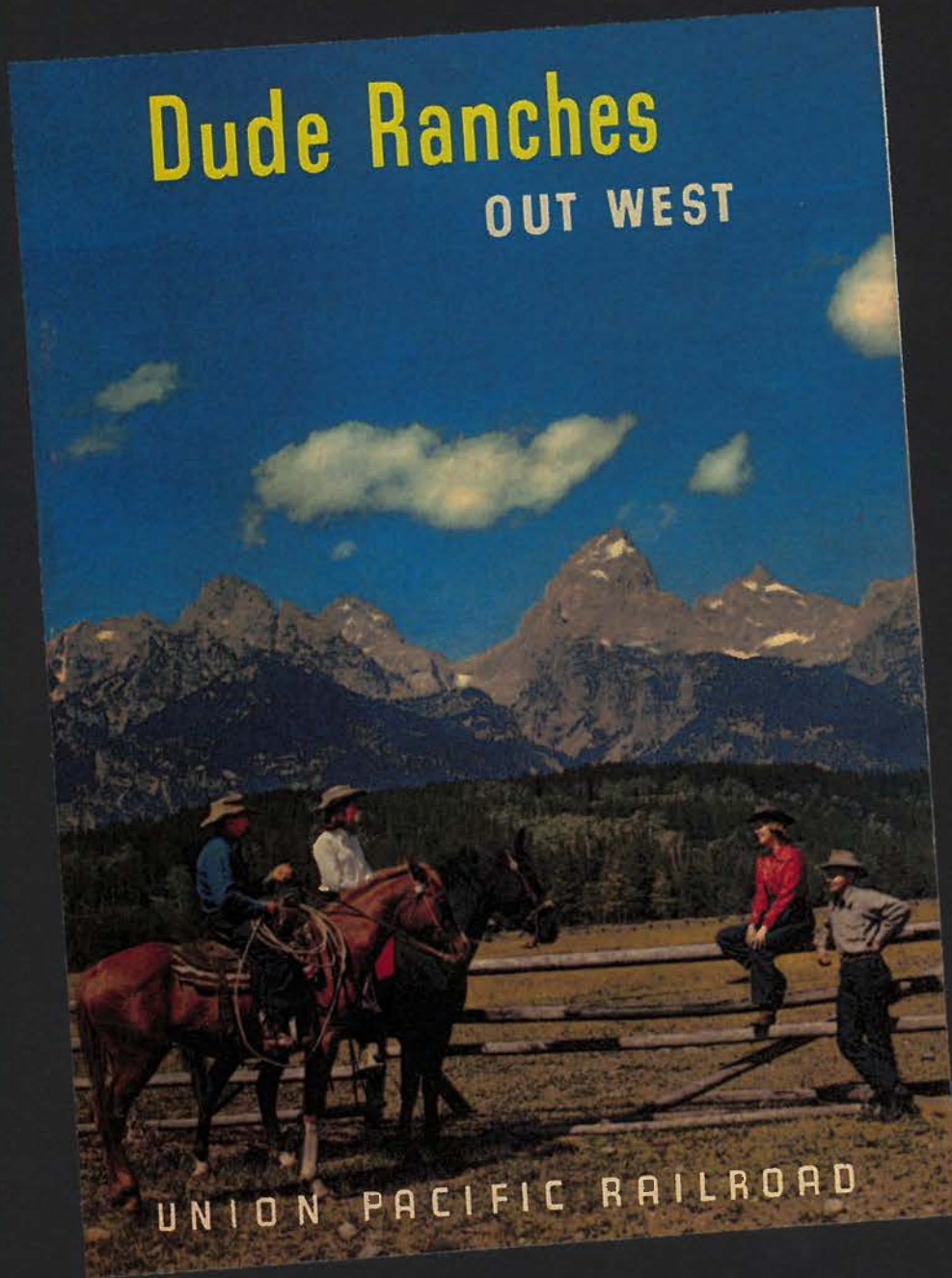
Reservations

It is advisable that you write to the ranch well in advance of your arrival to make definite reservations. When you write ask for literature as most ranch owners issue folders which contain illustrations and general information about their ranch which will assist you in reaching a decision.

Responsibility

Union Pacific believes to be reliable the statements regarding various ranches printed in this book, and they have been verified as much as possible. However, it cannot guarantee them as it has no part in the management of the ranches. Persons interested should correspond, in advance, with the ranch managers or owners who are glad to give references.

1959 UPRR



pages from 1959 Union Pacific Railroad promotional pamphlet

Wind River — Green River Ranches



Midway between Yellowstone National Park and South Pass, in west central Wyoming, the Wind River Range of the Rocky Mountains flings up its rugged crest to form what is perhaps the most dramatic wilderness remaining in continental United States. Dude ranchers in this region usually meet their guests at Rock Springs, Wyoming, on the Union Pacific.

⑤ CIRCLE S RANCH. Location: 30 miles north of Pinedale and 130 miles northwest of Rock Springs, Wyoming. Take Union Pacific to Rock Springs, where ranch car meets guests by arrangement. Elevation 7,665 feet. Season May 10 to November 10.

Accommodations: For 20 guests. Main lodge with single and double cabins; all have running water, some with private bath.

Activities: Riding, fishing, pack trips, square dancing, selected auto trips. Big game hunting in season. Boat trips on Green River.

Rates: On application. Special rates for children. References exchanged. For information and reservations write L. W. (Bill) Isaacs, Circle S Ranch, Cora, Wyoming.

CM RANCH. Location: 5 miles from Dubois, Wyoming. Take Union Pacific to Rawlins, Wyoming, where guests are met by appointment. Elevation 7,000 feet. June 1 to October 31.

Accommodations: For 50 to 60 people. Central lodge, separate guest cabins of one, two or three rooms each with private bath, also central bath house with tub and shower facilities.

Activities: Riding with individually assigned horses. Expert instruction as needed. Fishing, weekly rodeos, square dancing, water skiing, swimming, and big game hunting in season. Pack trips arranged.

Rates: On application. References exchanged. For information or reservations write L. E. Shoemaker, CM Ranch, Dubois, Wyoming.

11

★ FLYING A RANCH. Location: Thirty-five miles north of Pinedale, Wyoming. Elevation 8,000 feet. Take Union Pacific to Rock Springs, Wyoming, where ranch car will meet guests by appointment. \$10.00 each way.

Accommodations: For twenty persons in log cabins accommodating two, three, or four. Bath house. Meals in main lodge. June 1 to November 1.

Activities: Riding, fishing, hunting, swimming, pack trips.

Rates: On request to Mr. Max B. Gardens, Pinedale, Wyoming. References exchanged.

GP G P BAR RANCH. Location: Cora, Wyo. Elevation 8,000 feet. Take Union Pacific to Rock Springs, Wyoming, where guests are met with ranch car by appointment.

Accommodations: For thirty-five guests. June 15 to October 15.

Activities: Riding, fishing, hunting in season.

Rates: Rates and information by request to Stan. D. Decker, Cora, Wyoming.

T CROSS RANCH. Location: Fifteen miles north of Dubois, Wyo., reached via Union Pacific to Rawlins or Green River, Wyoming. Arrangements will be made for transportation of guests to the ranch. Elevation 7,900.

Accommodations: For twenty-five in one- or two-room cabins with private baths.

Activities: Range and mountain riding, trout fishing, pack trips. June 1 to October 15.

Rates: Will be quoted on request. References furnished and asked. Write Robert S. Cox, T Cross Ranch, Dubois, Wyoming.

Z BAR U RANCH. Location: 25 miles north of Pinedale, Wyoming; 130 miles north of Rock Springs, Wyoming. Take Union Pacific to Rock Springs, thence bus. Will meet in Rock Springs by arrangement. June 1 to November 1.

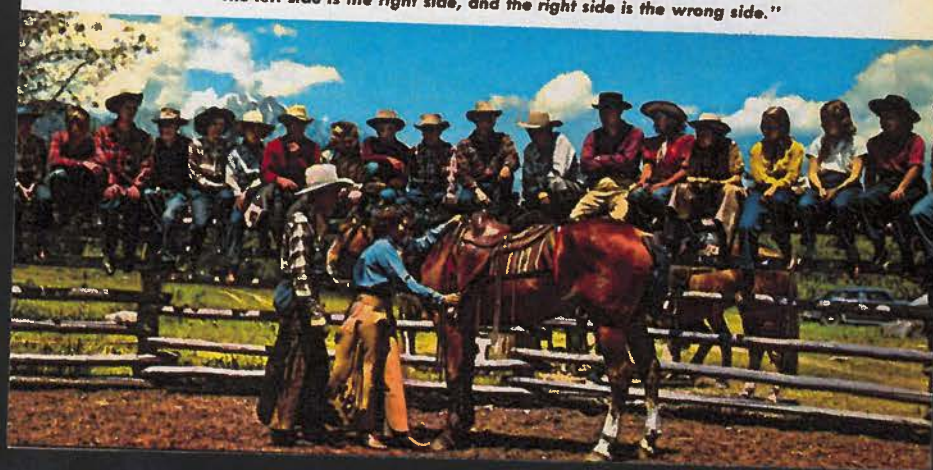
Accommodations: For 25 guests. Ranch house and individual log cabins. Centrally located bath house.

Activities: Riding, fishing, swimming, rodeos, pack trips. Big game hunting in season.

Rates: On application. References exchanged. For information or reservations write Sidney Reynolds, Cora, Wyoming.

12

"The left side is the right side, and the right side is the wrong side."



"From City to Saddle"

1959 UPRR



UNION PACIFIC
Domeliners
AND
Streamliners
SERVING
DUDE RANCHES

SWIFT SERVICE FROM CITY TO SADDLE

Union Pacific's fine fleet of Domeliners — in most cases — bring some of the West's finest dude ranches within an overnight trip from the concrete canyons of the city. From Chicago, the CITY OF DENVER, leaving the Union Station at 3:45 PM, places you in Denver the next morning, and ordinarily, by noon you are on the Colorado ranch of your choice, and ready to "saddle up."

For "dudes" from Chicago and east who select a ranch in Wyoming, Nevada or California, the Domeliners CITY OF LOS ANGELES and The CHALLENGER provide excellent service — the CITY OF PORTLAND serves the ranches in the Jackson Hole and Cody areas (with connecting sleeper service at Pocatello to West Yellowstone, Montana, and Victor, Idaho), Montana, Idaho, Oregon and Washington.

From St. Louis and Kansas City, Union Pacific's Domeliner CITY OF ST. LOUIS takes you rapidly toward the ranch of your choice in Colorado, Wyoming, Nevada or California, while the ever popular PORTLAND ROSE serves the ranches in northwestern Wyoming, Montana, Idaho, Oregon and Washington. When you choose Union Pacific you will enjoy unexcelled dining car service with special menus for children, beautiful club-lounge cars and the latest style coach and Pullman accommodations.

The Domeliners "City of Los Angeles" and the "City of Portland" — "City of Denver" are the only trains between Chicago and the West with three types of dome cars: dome coach, dome lounge car, and the only dome dining cars in the world. In addition they also carry a unique Redwood Lounge Car with five of the newest style bedrooms.

The "City of St. Louis" is the only through train between St. Louis and Los Angeles. Between Kansas City and Los Angeles it carries the same style Dome Lounge Car, and Dome Coach between St. Louis and Los Angeles, as on the other Pacific Coast domeliners.

FROM PACIFIC COAST THE SCHEDULES EASTBOUND ARE EQUALLY CONVENIENT.

And when you go Union Pacific your vacation starts the moment you board the train. You are assured of a safe and comfortable trip, enjoy sightseeing enroute and arrive at your destination relaxed and ready for a thrilling time. A car from the



ranch of your choice meets you at the railhead for a reasonable fee (and in many cases without charge). Most ranches prefer their guests to leave their cars at home to avoid wear and tear on roads that are kept basic and even primitive to conform with the unspoiled beauty of the West, and to save you the strain of driving unfamiliar mountain country.

More and more families are taking advantage of Union Pacific's Family Plan Fares . . . which really cut travel costs. The starting trip may begin on Monday, Tuesday, Wednesday or Thursday with liberal stop-overs enroute and return trip may start any

day of the week. For full details as to how this plan can save you money, for vacation or business travel, see list of Union Pacific offices on page 64, or your local travel agent.

62

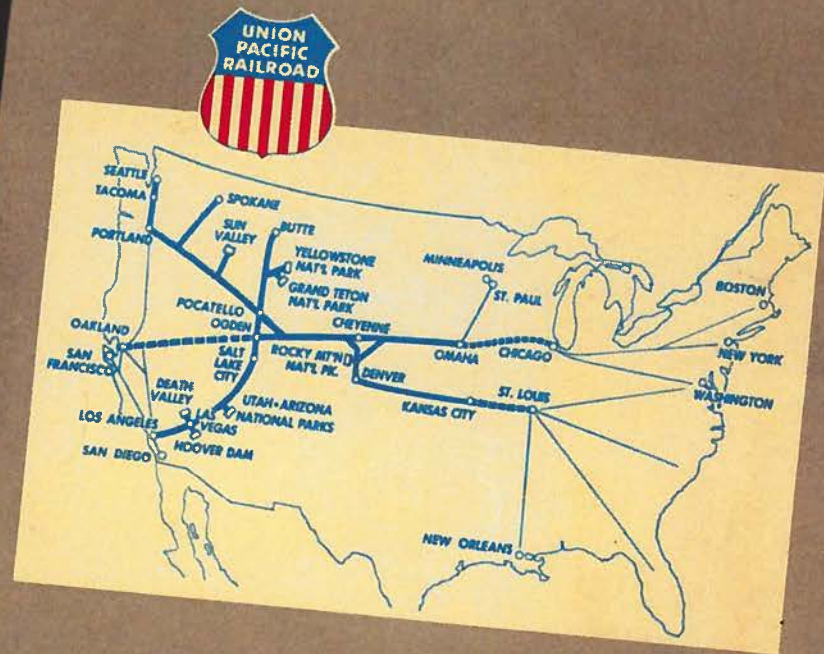
"Complete privacy in Pullman bedroom."





Where "East meets West" from Astra-Dome cars on "City of Los Angeles", "The Challenger", "City of Portland", "City of Denver" or "City of St. Louis."

"Meals that appeal" in beautiful dining cars.



**SERVING THE BEST OF THE WEST
WITH DEPENDABLE TRANSPORTATION**

KALBFLEISCH
NEWELL
GRINNELL
PRESIDENT
17 CLINTON AVE. SOUTH
ROCHESTER, N. Y.

**TRAVEL
AGENCY**
BAKER 5-5440

**Be Specific . . .
say UNION PACIFIC**

pages from 1959 Union Pacific Railroad promotional pamphlet

THE PINEDALE Roundup

PINEDALE, SUBLETTE COUNTY, WYOMING 82941

MARCH 30, 1967

Vol. 63, No. 20

Golden Eagle Passport Funds Used to Purchase Gannet Peak Ranch Land

UW Band Concert Here Wednesday

The University of Wyoming Symphonic Band will be in Pinedale Wednesday, April 5th, where they will hold a concert in the high school gym at 8:00 p.m.

There will be an admission charge of \$1.00 for adults, 50c for high school, and 25c for grade school children. The University band travels on a partial expense basis and each community is asked to feed and house them if they must stay overnight. The admission charge is necessary to help defray expenses incurred in housing and feeding.

The program promises to be a very rewarding and entertaining and all residents are urged to attend.

Big Piney to Present All-School Play

You're sure to enjoy watching the tiny country of Grand Fenwick, three miles by five

The Golden Eagle Passports are now on sale in Forest Service offices of the Bridger National Forest and in the Intermountain Region. A triangular sign displaying a large golden eagle will be posted at all areas where the recreation permit is required.

Jaycees To Hold Annual Ladies Night Banquet

The Pinedale Jaycees will hold their annual Ladies Night Banquet and meeting Friday night, March 31, at 7:30 at the Pinedale VFW Club Hall.

Featured speakers at the meeting will be Clyde Wilson, Jaycee regional vice president of Evanston; Sam Ishmael, a national Jaycee director of Rawlins; and Joe Mason, state Jaycee president of Lander. Other prominent civic leaders in Pinedale have also been invited and will give short talks.

The main objective of this annual meeting is to create interest in the Jaycees and to inform the general public what the group is and what they are

This year, the new passport is a plastic coated, wallet-size card. It still sells for \$7 and will admit the purchaser and all the passengers in his car to any Federal Recreation Area where fees are required. It is a season ticket and can be used as many times and in as many areas as you wish. Single day permits may be purchased for \$1 per car instead of the yearly \$7 season ticket. Other activities such as hunting, fishing, riding or hiking in the undeveloped areas of the Forest are not affected by the charge program.

There are no separate user fees in effect on the Bridger National Forest.

These permits are authorized by the Land and Water Conservation Act of 1965. Money from sales helps states and their local governments to meet outdoor recreation needs. A portion of these funds are also made available for purchase of key recreational sites by government agencies. It was this money that was used to purchase the Gannet Peak Ranch at Green River Lakes. During 1966, Wyoming received \$644,043.00.

1966
FOREST SERVICE BUYS GP



Bridger Teton National Forest
Supervisor's Office, Jackson, Wyo.

1966

Pinedale Round Up 3-30-1967

Teno asks Forest Service to Save Green River Lodge

Congressman Teno Roncalio Tuesday asked the Forest Service to reconsider its plans to dispose of the Green River Lake Lodge and to auction off or demolish 15 cabins all located north of Pinedale at the head of the Green River.

Roncalio said the Forest Service plans would be to use the lodge at the sight intact for use as a visitor's center. In a letter to Forest Service Chief John McGuire, Roncalio said, "destruction of Green River Lake Lodge would result in the loss of yet another rustic site rich in the history and beauty of Wyoming". The site, originally used by Stan Decker, or the GP Bar Ranch, was purchased by the Forest Service with Golden Eagle funds for public recreation purposes. Roncalio added, "rather than convey or demolish this sturdy structure, I suggest the Forest Service initiate a study to convert the property into a na-

tional youth camp. The cabins would accommodate 60 to 70 young people benefiting hundreds annually. Such a program would inspire the cooperation of numerous organizations including Boy Scouts, Girl Scouts, Camp Fire Girls, YMCA, and YWCA.

Roncalio said, "removal of the buildings would not be feasible because it would require destruction of surrounding large pine trees." He said, "conversion of the site to a youth camp could involve area youngsters in productive and enriching outdoor experiences." Roncalio closed his letter with a request that the matter be given top priority and that public funds not be wasted by the disposal of property which is in good condition.

He said the area, located in southwestern Wyoming, an outstanding scenic region, should be available for public enjoyment.

Pinedale Round Up

Forest Service to sell log cabins at Green River

The Bridger-Teton National Forest is now accepting bids for the purchase and removal of sixteen log buildings located at Green River Lakes, some 50 miles north of Pinedale, Wyoming.

The buildings, which were once part of the old GP Bar Ranch, must be removed from National Forest land by September 30, 1974, and in accordance with Forest Service Specifications.

Bids may be submitted for one or more of the buildings which are designated for sale. Successful bids will be announced on July 1, 1974. Person's interested in purchasing these buildings should contact the Forest Service office in Pinedale or Jackson, Wyoming, for further information and bid forms.

April 25, 1974

GP-Bar Decision Delayed by Forest

Green River District Forest Ranger Mal Holt said that action to remove the GP-Bar buildings from the Lower Green River Lake will be delayed until next spring. Holt said that the delay is in response to the request of interested citizens that alternative uses for the buildings be considered by the Forest Service.

The GP-Bar Ranch buildings, on the shore of Lower Green River

Lake, were purchased by the Government in 1966. The purpose of the purchase was to remove the buildings and return this portion of the lakeshore to general public use.

Ranger Holt stated that he would be glad to meet with any interested group or persons to hear their thoughts and ideas on future management of the Green River Lake area.

August 31, 1972

September 21, 1972

...committee asks
...pledges now
...pictured. See the
...page of the
...section.



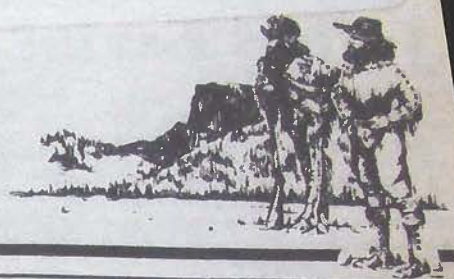
**Canal
decision**
...rules gener-
...in favor of
...Story on
...page 2.



the PINEDALE ROUNDUP

Volume 78 * Number 44 Thursday, August 25, 1983

PINEDALE LIBRARY
BOX 628
PINEDALE WY 82941



The GP Bar *Remains of the old GP Bar stand at the head of the Upper Green River just below Squaretop Mountain.*

Osborn Cabins, part of the GP, in August 1983

Osborn Homestead Cabins

Robert L. Osborn, a Civil War veteran who had worked in the upper Green River area as a tie hack, moved with his wife to this property about 1899 and began homesteading. The Wyoming State Engineer's report for the years 1899 and 1900 mentions that "From Wells post office to Green River Lakes, a distance of twelve miles, there is but little irrigation, although Mr. Robert L. Osborn, whose ranch is just at the outlet of Green River Lakes, has a few ditches in use. The irrigation is for hay alone." (Wyoming State Engineer Fifth Biennial Report, 1901, p. 32) Eight years later, the State Engineer's report reflects in its Permits to Appropriate Water summary table that Robert L. Osborn was appropriated water from Mill Creek, ditch length 0.85 miles, ditch top width 3 ft, ditch bottom width 2 ft, ditch depth 1 ft, grade of 26 ft drop per mile, cost estimate of 50, irrigated acreage of 111 and completion date of 1908 (Wyoming State Engineer Ninth Biennial Report, 1908, p.98) That same year, county records show a mortgage deed loan of \$400 from the Rock Springs National Bank to Osborn, dated November 21, 1908; some six months later, on May 17, 1909, he paid back the loan. Robert L. Osborn submitted final proof for Homestead Entry 0205 on August 17, 1908, a government land survey for the homestead entry was completed October 15, 1909, and the land, consisting of \pm 160 acres was patented from the government on August 4, 1911.

He apparently took into partnership or interest, undoubtedly for financial considerations, Rock Springs banker John Hay, and also Abner Luman, from Cora. Luman, the major rancher along the Green River in this area, operated the property as summer pasture in his vast ranch holdings, assuming primary ownership of the property in 1919. To meet financial obligations during the hard times of the Depression, Luman sold the private ranch on April 4, 1931 for \$4000 to the Green River Lake Lodge, a dude ranch already operating on Forest land on the west side of the river, managed by W.N. Hobson. Stanley D. Decker Jr. a Utah banker and partner with Hobson, assumed complete ownership of Green River Lake Lodge not long after. Decker incorporated this ranch with the adjoining dude operation, then called the Gannett Peak (or GP) Bar Ranch. He, as GP Bar owner, ultimately sold the private land back to the U.S. government on Dec. 8, 1966 for \$44,891; the land once homesteaded by Osborn became federal property administered by the Bridger-Teton National Forest, Pinedale Ranger District.

Recognizing the historic significance of the Osborn homestead site and the deteriorating condition of its buildings, the Forest Service implemented a major stabilization and restoration effort on the cabins in 1991.

Osborn Homestead

PINEDALE
Cabin

www.PinedaleWyoming.com
www.PinedaleOnline.com

Visitor's Guide to Pinedale, Wyoming
www.PinedaleOnline.com

[Home](#) | [Calendar of Events](#) | [Photo Gallery](#) | [Local Businesses](#)

[Pinedale Online](#) > [News](#) > [November 2006](#) > [Osborn Cabin](#)

Osborn Cabins

November 13, 2006


Dave Bell took this photo of the Osborn Cabins near Green River Lakes on Sunday.

The cabins are part of a homestead from the early 1900s. They later became part of the G.P. Bar Ranch, which operated as a guest ranch on the edge of Green River Lakes.

The land and cabins were sold to the U.S. Forest Service in 1966 and most of the cabins were sold and removed. One of the original cabins from the ranch still remains and can be seen near Green River Lakes Campground. It is used only occasionally as an administrative building and is not open to the public.

The cabin in this photo is located on the east side of the Green River near the outlet of the lake, accessible from the footbridge near the trailhead into the wilderness.

For more photos from Dave's trip to the Upper Green on Sunday, and other scenic photos of the area, see his photo gallery: [Dave Bell Photo Gallery](#)



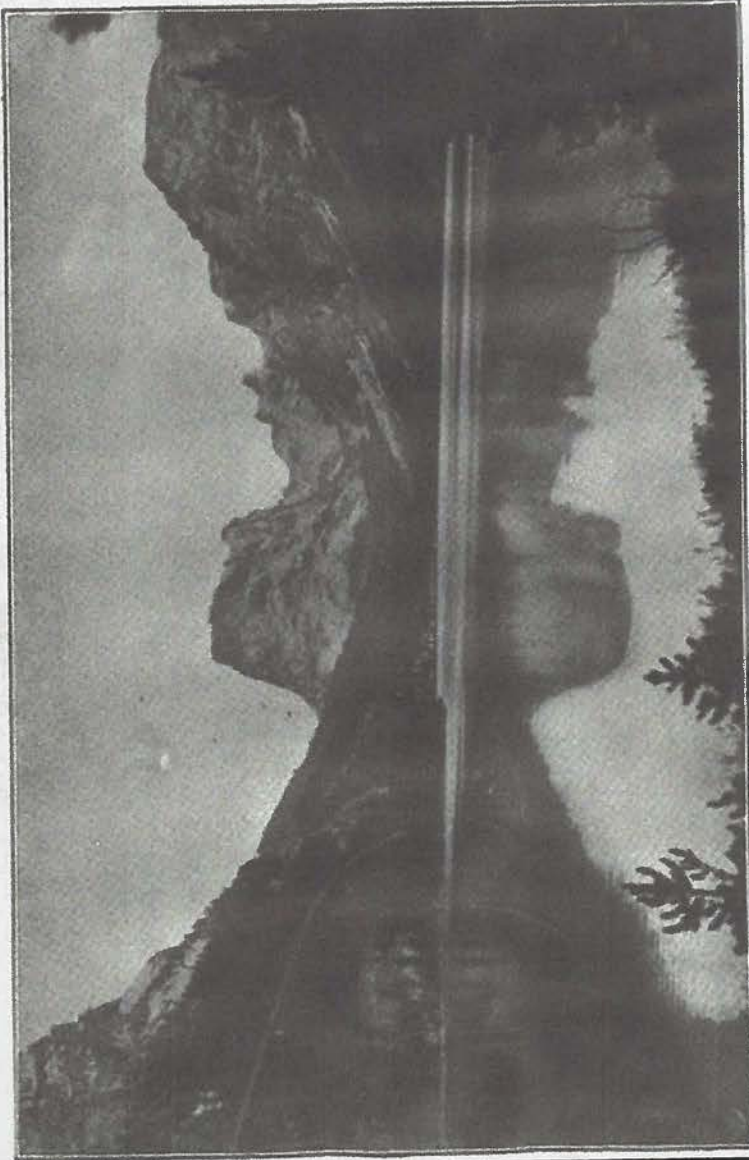
Osborn Cabin
Osborn Cabin by Green River Lakes.



Dave Bell photo November, 2006

Osborn Homestead History

TO THE
ASSOCIATION



UPPER GREEN RIVER LAKE.

AGRICULTURAL
LIBRARY,
UNIVERSITY
—OF—
CALIFORNIA.

Fifth Biennial Report

—OF THE—

STATE ENGINEER

—TO THE—

GOVERNOR OF WYOMING

—FOR THE—

Years 1899 and 1900.

CHEYENNE, WYO.
THE S. A. BRISTOL COMPANY, PRINTERS AND BOOKBINDERS
1901

Fifth Biennial Report (1901)

Osborn Homestead History

32

ENGINEER'S REPORT.

is located on the East Fork of New Fork, just above the junction of that stream with New Fork River, and thirty miles from Piney Creek. The flow of East Fork at this point, on September 19th, was estimated at about eight second feet.

Boulder Creek, with a flow of three second feet; Fall Creek, with one-half a second foot; Pole Creek with 8.52 second feet and Pine Creek with a flow of 71.4 feet were successively crossed and gauged. Pine Creek, as the gauging shows, was far the largest of all these tributaries of New Fork from the east, a far larger and finer stream than New Fork itself, at the junction of these two streams, and should properly have been named as the principal stream. It is a roaring mountain torrent, even at the end of an unusually dry season. About five miles above the point gauged, it forms the outlet of Fremont's Lake. At Cora postoffice, about thirty-eight miles north of Piney Creek by direct stage route, New Fork carried not to exceed two second feet. It is in this section that some of the earlier appropriators were unable to secure water to which they were entitled during the past season. They appear practically unanimous in asking for an adjudication, and the matter will be laid before the Board of Control at its next meeting. Irrigation ditches obtain for about six miles above Cora postoffice, but no more were seen from Alexander to Wells, the latter being the last and farthest north of the postoffices on Green River.

From Wells postoffice to Green River Lakes, a distance of twelve miles, there is but little irrigation, although Mr. Robert L. Osborn, whose ranch is just at the outlet of Green River Lakes, has a few ditches in use. The irrigation is for hay alone.

Green River Lakes are two in number, and are situated just within the Wind River Mountains, the point where the river leaves the lower lake being also the point where it leaves the mountains. A gauging of the river, a few hundred feet below the lower lake, gave a flow of 89.4 second feet.

The scenery in the vicinity of Green River Lakes is very fine, being equalled, as is claimed by those familiar with both sections, only by that in the Yellowstone National Park, and surpassed nowhere in Wyoming. The altitude of the lakes, by aneroid, was 8,100 feet.

The examination of the streams discharging into Green River from the west was made on the return. Beaver Creek,



LOWER GREEN RIVER LAKES.

Fifth Biennial Report (1901)

Osborn Homestead Land Patent

4-1003-R.

LANDER 04847.

The United States of America,
To all to whom these presents shall come. Greeting:

WHEREAS, a Certificate of the Register of the Land Office at **LANDER, WYOMING,** has been deposited in the General Land Office, whereby it appears that, pursuant to the Act of Congress of May 20, 1862, "To Secure Homesteads to Actual Settlers on the Public Domain," and the acts supplemental thereto, the claim of **ROBERT L. OSBORN**

has been established and duly consummated, in conformity to law, for the **N. E. SURVEY NO. 39, EMBRACING A PORTION OF TOWNSHIP THIRTY-NINE NORTH OF RANGE ONE HUNDRED EIGHT WEST OF THE SIXTH PRINCIPAL MERIDIAN, WYOMING, MORE PARTICULARLY BOUNDED AND DESCRIBED AS FOLLOWS; BEGINNING AT A POINT FROM WHICH THE CORNER TO SECTIONS TWENTY-FOUR AND TWENTY-FIVE ON EAST BOUNDARY OF TOWNSHIP THIRTY-NINE NORTH OF RANGE ONE HUNDRED NINE WEST OF THE SIXTH PRINCIPAL MERIDIAN BEARS SOUTH SIXTY-TWO DEGREES, TWENTY MINUTES WEST TWENTY-THREE AND SIXTY-NINE HUNDREDS EAST TWENTY CHAINS, THENCE EAST SIXTY CHAINS, THENCE SOUTH FORTY DREDS CHAINS DISTANT; THENCE NORTH SIXTY CHAINS, THENCE WEST FORTY CHAINS, THENCE SOUTH SEVENTEEN MINUTES WEST NINETEEN AND EIGHTY-SEVEN HUNDREDS CHAINS TO THE PLACE OF BEGINNING, CONTAINING ONE HUNDRED FIFTY-NINE AND SEVENTY-FOUR-HUNDREDS AGRES,**

according to the Official Plat of the Survey of the said Land, returned to the GENERAL LAND OFFICE by the Surveyor-General: **NOW KNOW YE** That there is, therefore, granted by the UNITED STATES unto the said claimant the tract of Land above described; and to the heirs and assigns of the said claimant forever; subject to any vested and accrued water rights for mining, agricultural, manufacturing, or other purposes, and rights to ditches and reservoirs used in connection with such water rights, as may be recognized and acknowledged by the local customs, laws, and decisions of courts; and there is reserved from the lands hereby granted, a right of way thereon for ditches or canals constructed by the authority of the United States.

IN TESTIMONY WHEREOF, I, **WILLIAM H. TAFT**
 President of the United States of America, have caused these letters to be made Patent, and the seal of the General Land Office to be hereunto affixed.

GIVEN under my hand, at the City of Washington, the **FOURTH** day of **AUGUST** in the year of our Lord one thousand nine hundred and **ELEVEN** and of the Independence of the United States the one hundred and **THIRTY-SIXTH**.

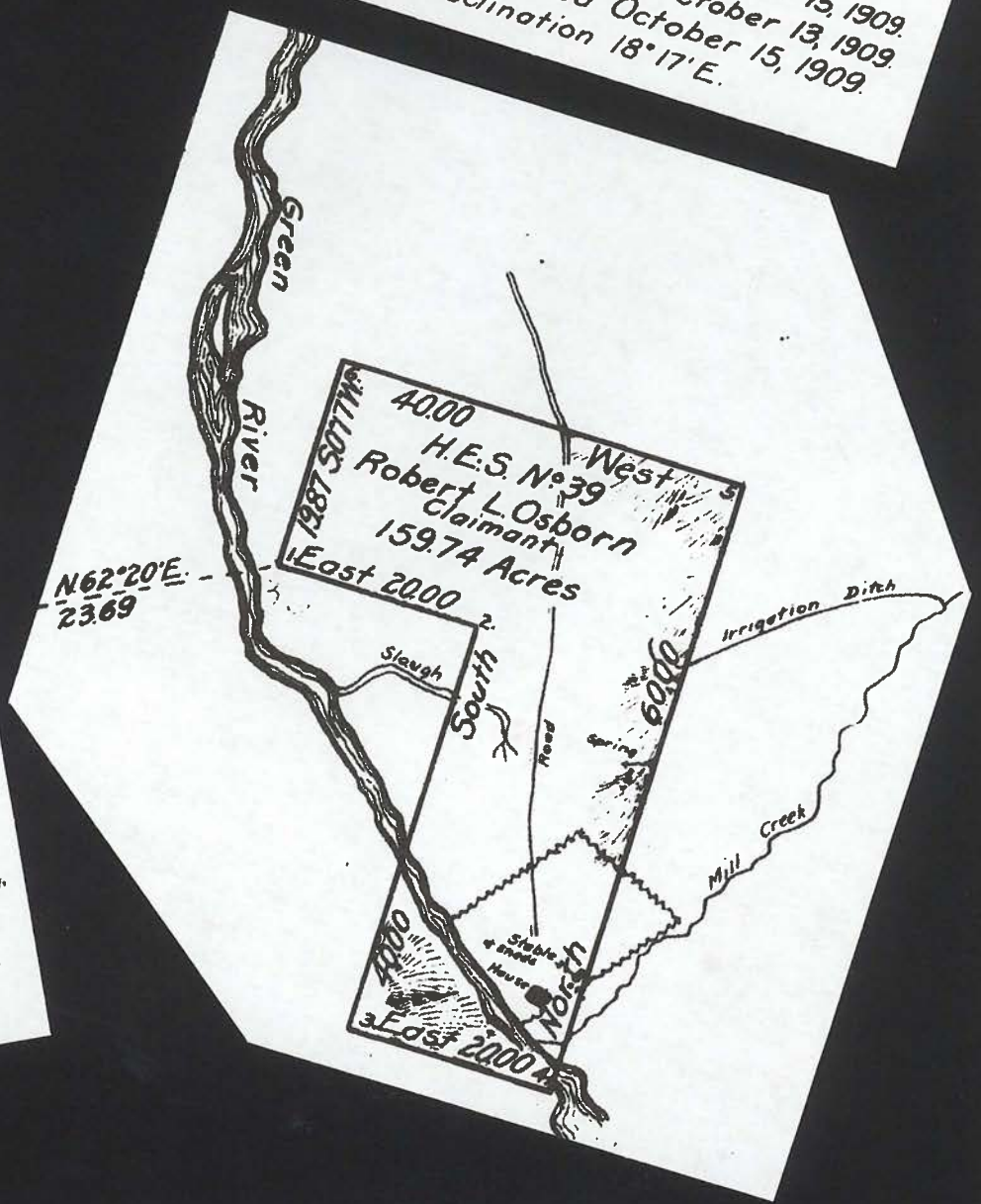
By the President: **WM. H. TAFT** Secretary,
 By **M. P. LE ROY**
H. W. SANFORD. Recorder of the General Land Office.

RECORD OF PATENTS: Patent Number **219987**
 6-2177

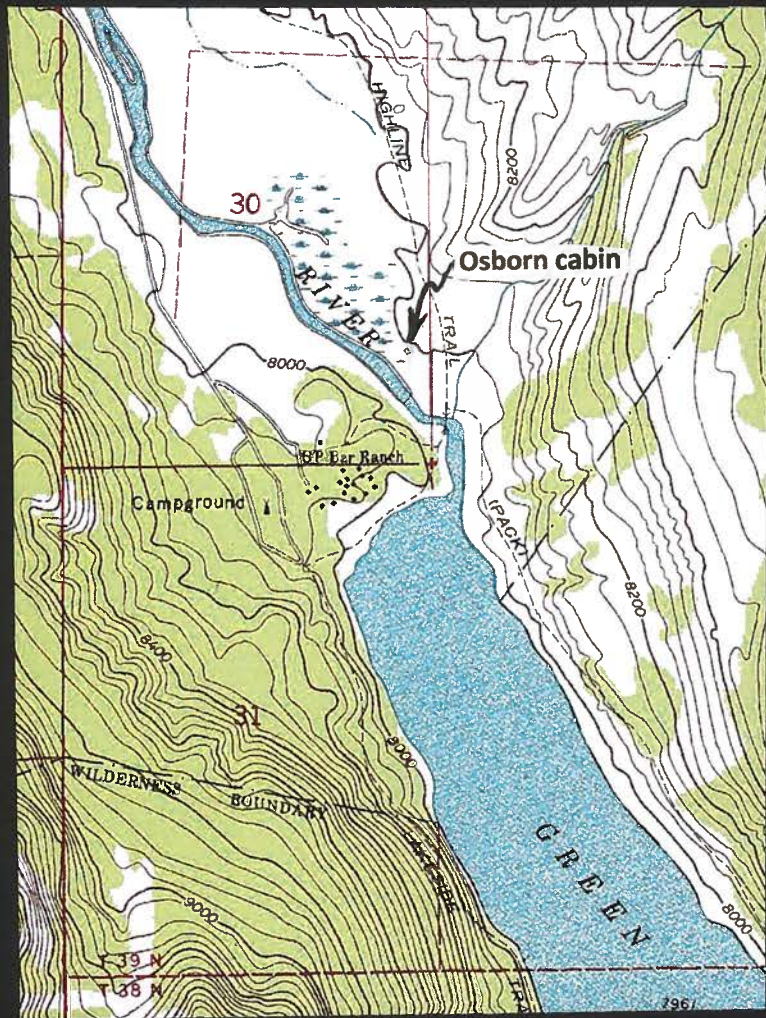
4 August 1911

Homestead Entry Survey

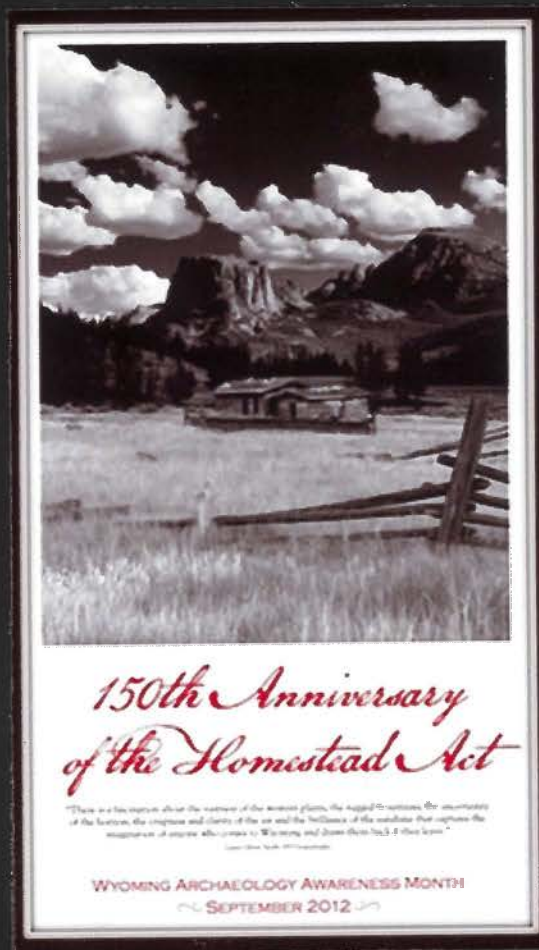
H.E. 0205, Evanston, Wyoming.
 Final proof submitted August 17, 1908.
 Surveyed by W. H. McDonald under instructions dated September 15, 1909.
 Survey commenced October 13, 1909.
 Survey completed October 15, 1909.
 Magnetic Declination 18°17'E.



Osborn Homestead



1968 USGS 7.5' topo map
Green River Lakes, Wyo.



Wyoming SHPO poster
2012

GP-Bar Ranch

History Scrapbook

Prepared by
Sublette County Historic Preservation Board
Certified Local Government
2017

Getting a New Slant on Life

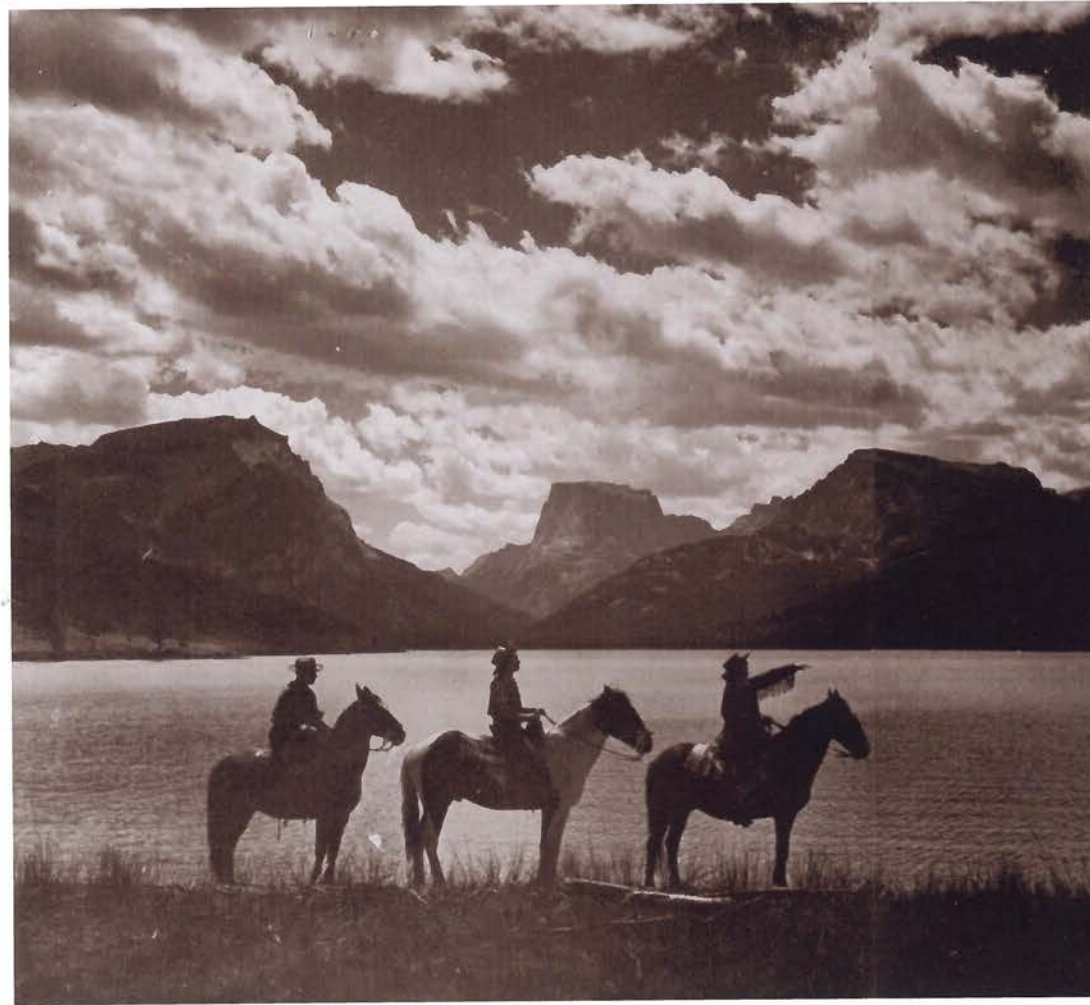


Image courtesy Emmett D. Chisum Special Collections,
University of Wyoming Libraries GV198.96.W82 G63 1941